

Activity ID	Activity Description	Orig Dur	Rem Dur	%	Early Start	Early Finish	Late Start	Late Finish	Total Float	Resource	Budgeted Cost	2012																	
												JUL	AUG			SEP			OCT			NOV							
												16	23	30	6	13	20	27	3	10	17	24	1	8	15	22	29	5	12
ADMINISTRATIVE ACTIVITIES																													
ADMINISTRATIVE																													
ADMINISTRATIVE																													
Mobilization																													
0002	Notice to Proceed	0	0	100							0.00	◆ Notice to Proceed																	
0003	Inspector's Trailer	15	0	100						MANHOURS	8,000.00	▼ Inspector's Trailer																	
0004	Contractor Mobilization	21	0	100						MANHOURS	921,000.00	▼ Contractor Mobilization																	
0685	Substantial Completion	0	0	0		07OCT12		06OCT12*	-1		0.00	◆ Substantial Completion																	
0005	Demobilization	10	10	0	08OCT12	23OCT12	16NOV12	05DEC12	24	MANHOURS	24,000.00	Demobilization																	
0695	Final Completion	0	0	0		16NOV12		06DEC12*	20		0.00	◆ Final Completion																	
PROCUREMENT																													
PROCUREMENT																													
SUBMITTALS																													
Submittals																													
0007	Reinf. Shops- Overhead Air Line	67	0	100							0.00	▼ Reinf. Shops- Overhead Air Line																	
0008	Manholes Shops	65	0	100							0.00	▼ Manholes Shops																	
0009	Precast Building Shops	80	0	100							0.00	▼ Precast Building Shops																	
0010	Metal Building Shops	90	0	100							0.00	▼ Metal Building Shops																	
0011	Misc. Metals Shops	75	0	100							0.00	▼ Misc. Metals Shops																	
0013	Transformers Shops	60	0	100							0.00	▼ Transformers Shops																	
0014	Switchgear, Panels, Overcurrent,	60	0	100							0.00	▼ Switchgear, Panels, Overcurrent, MCC & VFD Shops																	
0015	Generators & Transfer Switches	60	0	100							0.00	▼ Generators & Transfer Switches Shops																	
0016	RAS Pumps Shops	90	0	100							0.00	▼ RAS Pumps Shops																	
0017	Mixers Shops	90	0	100							0.00	▼ Mixers Shops																	
0018	Chemical Pumps Shops	70	0	100							0.00	▼ Chemical Pumps Shops																	
0019	Chem Storage Tanks Shops	70	0	100							0.00	▼ Chem Storage Tanks Shops																	
0020	Blowers Shops	110	0	100							0.00	▼ Blowers Shops																	
0021	Refurbish Pumps Shops	60	0	100							0.00	▼ Refurbish Pumps Shops																	
0022	Screen Shops	95	0	100							0.00	▼ Screen Shops																	
0023	Denitrification Shops	120	0	100							0.00	▼ Denitrification Shops																	
0024	UV Equipment Shops	70	0	100							0.00	▼ UV Equipment Shops																	
0025	Methanol System Shops	80	0	100							0.00	▼ Methanol System Shops																	
0026	Valves Shops	90	0	100							0.00	▼ Valves Shops																	
0027	Yard Piping Shops	70	0	100							0.00	▼ Yard Piping Shops																	
0028	Instrumentation Shops	120	0	100							0.00	▼ Instrumentation Shops																	
0031	Disconnects	21	0	100							0.00	▼ Disconnects																	
0041	Heat Trace	21	0	100							0.00	▼ Heat Trace																	
0622	Sluice Gates Shops	90	0	100							0.00	▼ Sluice Gates Shops																	
0632	Diffusers Shops	90	0	100							0.00	▼ Diffusers Shops																	
0642	Submersible Pumps Shops	90	0	100							0.00	▼ Submersible Pumps Shops																	
0688	Wire and Conduit Shops	45	0	100							0.00	▼ Wire and Conduit Shops																	
0718	Reinf. Shops- Equal. Pump Sta.	75	0	100							0.00	▼ Reinf. Shops- Equal. Pump Sta.																	
0728	Reinf. Shops- Equal. Tanks 1 & 2	55	0	100							0.00	▼ Reinf. Shops- Equal. Tanks 1 & 2																	
0738	Reinf. Shops- PE/RAS Box	55	0	100							0.00	▼ Reinf. Shops- PE/RAS Box																	
0748	Reinf. Shops- Reactors 1 & 2	55	0	100							0.00	▼ Reinf. Shops- Reactors 1 & 2																	
0758	Reinf. Shops- Reactors 3 & 4	85	0	100							0.00	▼ Reinf. Shops- Reactors 3 & 4																	
0768	Reinf. Shops- Denitrification	74	0	100							0.00	▼ Reinf. Shops- Denitrification																	
0778	Reinf. Shops- Rapid Mix	79	0	100							0.00	▼ Reinf. Shops- Rapid Mix																	
0788	Reinf. Shops- Sodium Hydroxide	85	0	100							0.00	▼ Reinf. Shops- Sodium Hydroxide																	
0798	Reinf. Shops- Equal Elect. Bldg.	85	0	100							0.00	▼ Reinf. Shops- Equal Elect. Bldg.																	
0808	Reinf. Shops- U.V. Tank	95	0	100							0.00	▼ Reinf. Shops- U.V. Tank																	
0957	Steel Sheet Piping Shops	85	0	100							0.00	▼ Steel Sheet Piping Shops																	
0967	Auger Cast Pile Shops	85	0	100							0.00	▼ Auger Cast Pile Shops																	
0977	Paving Material Shops	85	0	100							0.00	▼ Paving Material Shops																	
0987	Seeding Shops	95	0	100							0.00	▼ Seeding Shops																	
0997	Concrete Material Shops	60	0	100							0.00	▼ Concrete Material Shops																	

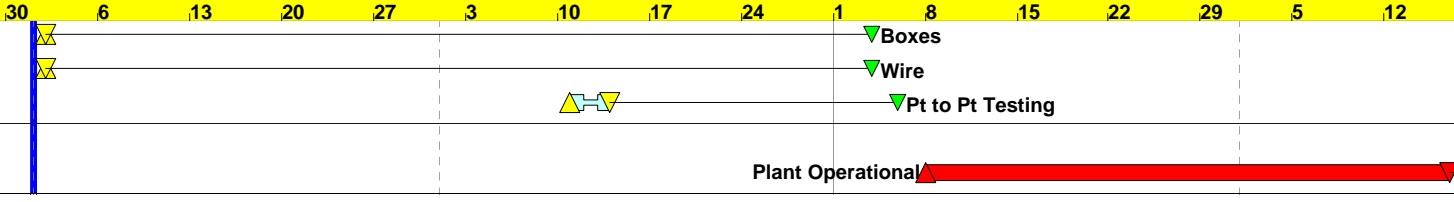
Activity ID	Activity Description	Orig Dur	Rem Dur	%	Early Start	Early Finish	Late Start	Late Finish	Total Float	Resource	Budgeted Cost	2012																	
												JUL			AUG				SEP			OCT			NOV				
												16	23	30	6	13	20	27	3	10	17	24	1	8	15	22	29	5	12
EQ Electrical Building																													
0828	HVAC Equip.- Final O & M	30	0	100							0.00	▼HVAC Equip.- Final O & M																	
UV Disinfection Facility																													
0809	UV Equip.- Final O & M	30	0	100							0.00	▼UV Equip.- Final O & M																	
0829	Hoist- Final O & M	30	0	100							0.00	▼Hoist- Final O & M																	
FIELD ACTIVITIES																													
Chlorine Contact Tank																													
0516.2	Bypass Pumping Chlorine	7*	7*	0	06AUG12	12AUG12	29AUG12	05SEP12	24		0.00	▼Bypass Pumping Chlorine Contact																	
Plant Wide E&I																													
0142	Control System Testing- 17166	5	5	0	18SEP12	22SEP12	17SEP12	21SEP12	-1	MANHOURS	500.00	▼Control System Testing- 17166																	
0685.2	Plant Operational Test	20	20	0	18SEP12	07OCT12	17SEP12	06OCT12	-1		0.00	▼Plant Operational Test																	
Site Work																													
0054	Conc. Curbs	10	10	0	02AUG12	17AUG12	06AUG12	21AUG12	2	MANHOURS	4,300.00	▼Conc. Curbs																	
0049	Strip Topsoil	10	2	80	02AUG12	03AUG12	16AUG12	17AUG12	8	MANHOURS	16,300.00	▼Strip Topsoil																	
0050	Site Cut and Fill	20	4	80	02AUG12	07AUG12	16AUG12	21AUG12	8	MANHOURS	410,000.00	▼Site Cut and Fill																	
0056	Pipe Bollards	10	10	0	02AUG12	17AUG12	24AUG12	10SEP12	13	MANHOURS	16,100.00	▼Pipe Bollards																	
0044	LOD Fence	10	0	100						MANHOURS	13,300.00	▼LOD Fence																	
0045	Tree Protection	5	0	100						MANHOURS	17,300.00	▼Tree Protection																	
0046	Initial E&S Controls	5	0	100						MANHOURS	31,200.00	▼Initial E&S Controls																	
0047	Sediment Trap ST-1	20	0	100						MANHOURS	24,850.00	▼Sediment Trap ST-1																	
0048	Site Demolition	10	0	100						MANHOURS	45,815.00	▼Site Demolition																	
0058	Stormwater System	20	0	100						MANHOURS	95,000.00	▼Stormwater System																	
0047.4	Sediment Trap ST-2	20	0	100						MANHOURS	24,850.00	▼Sediment Trap ST-2																	
0055	Conc. Walks	10	10	0	20AUG12	04SEP12	23AUG12	07SEP12	2	MANHOURS	28,800.00	▼Conc. Walks																	
0053	Turf Paving	10	10	0	29AUG12	14SEP12	07SEP12	24SEP12	5	MANHOURS	20,200.00	▼Turf Paving																	
0059	Landscaping	10	10	0	06SEP12	21SEP12	10SEP12	25SEP12	2	MANHOURS	16,000.00	▼Landscaping																	
0051	Patch Paving	15	15	0	06SEP12	01OCT12	11SEP12	05OCT12	3	MANHOURS	27,000.00	▼Patch Paving																	
0060	Site Restoration	15	14	5	10SEP12	02OCT12	13SEP12	05OCT12	2	MANHOURS	14,000.00	▼Site Restoration																	
0052	New Paving	10	10	0	14SEP12	01OCT12	20SEP12	05OCT12	3	MANHOURS	65,000.00	▼New Paving																	
Yard Piping Installation & Testing																													
0093	Stainless 4	10	3	70	14JUN11A	06AUG12	14JUN11A	14SEP12	23	MANHOURS	21,700.00	▼Stainless 4																	
0066	Primary Effluent D RAS	5	2	55	02AUG12	03AUG12	30JUL12	31JUL12	-2	MANHOURS	21,500.00	▼Primary Effluent D RAS																	
0067	Reactor Influent B RAS	8	3	63	02AUG12	06AUG12	30JUL12	02AUG12	-2	MANHOURS	34,000.00	▼Reactor Influent B RAS																	
0067.2	Reactor Influent C RAS	3	2	45	02AUG12	03AUG12	30JUL12	31JUL12	-2	MANHOURS	22,250.00	▼Reactor Influent C RAS																	
0067.6	Reactor Influent F RAS & Line I	8	3	63	02AUG12	06AUG12	30JUL12	02AUG12	-2	MANHOURS	40,000.00	▼Reactor Influent F RAS & Line I																	
0064	Flow Eq Influent 20 EQ	2	2	0	02AUG12	03AUG12	03AUG12	06AUG12	1	MANHOURS	6,600.00	▼Flow Eq Influent 20 EQ																	
0068	Final Clarifier Influent 36 K UV	5	1	90	02AUG12	02AUG12	06AUG12	06AUG12	2	MANHOURS	14,600.00	▼Final Clarifier Influent 36 K UV																	
0091	RAS A,H	10	8	20	02AUG12	14AUG12	14AUG12	27AUG12	7	MANHOURS	55,200.00	▼RAS A,H																	
0069	Final Clarifier Effluent J UV	5	0	100						MANHOURS	22,000.00	▼Final Clarifier Effluent J UV																	
0063	Flow Eq Influent 30 P EQ	5	5	0	06AUG12	13AUG12	07AUG12	14AUG12	1	MANHOURS	19,400.00	▼Flow Eq Influent 30 P EQ																	
0090	WAS 6	5	5	0	06AUG12	13AUG12	07AUG12	14AUG12	1	MANHOURS	4,800.00	▼WAS 6																	
0062	Plant Influent O EQ	5	5	0	07AUG12	14AUG12	09AUG12	16AUG12	1	MANHOURS	19,300.00	▼Plant Influent O EQ																	
0067.4	Reactor Influent E RAS	3	2	45	07AUG12	09AUG12	13AUG12	14AUG12	3	MANHOURS	22,250.00	▼Reactor Influent E RAS																	
0067.8	Reactor Influent G RAS	8	3	62	07AUG12	10AUG12	13AUG12	16AUG12	3	MANHOURS	40,000.00	▼Reactor Influent G RAS																	
0079	Filter Recycle 8 N Grit	10	0	100						MANHOURS	36,500.00	▼Filter Recycle 8 N Grit																	
0065	Flow EQ Return Q EQ	5	5	0	09AUG12	16AUG12	10AUG12	17AUG12	1	MANHOURS	15,700.00	▼Flow EQ Return Q EQ																	
0080	Filter Recycle 10	2	2	0	14AUG12	16AUG12	16AUG12	17AUG12	1	MANHOURS	1,700.00	▼Filter Recycle 10																	
0075	Plant Drain 6	2	2	0	14AUG12	16AUG12	31AUG12	04SEP12	11	MANHOURS	1,600.00	▼Plant Drain 6																	
0092	Sludge Transfer	3	3	0	14AUG12	17AUG12	31AUG12	06SEP12	11	MANHOURS	2,200.00	▼Sludge Transfer																	
0074	Plant Drain 4	3	2	40	16AUG12	17AUG12	17AUG12	20AUG12	1	MANHOURS	5,300.00	▼Plant Drain 4																	

Activity ID	Activity Description	Orig Dur	Rem Dur	%	Early Start	Early Finish	Late Start	Late Finish	Total Float	Resource	Budgeted Cost	2012														
												JUL			AUG				SEP			OCT			NOV	
												16	23	30	6	13	20	27	3	10	17	24	1	8	15	22
0248.2	Base Slab Reactor 1	4	1	80	03AUG12	03AUG12	31JUL12	31JUL12	-2	MANHOURS	57,050.00															
0249.21	Walls Pour 2 Reactor 1	4	3	20	03AUG12	07AUG12	31JUL12	03AUG12	-2	MANHOURS	40,200.00															
0249.1	Walls Pour 1 Reactor 1	6	0	100						MANHOURS	53,600.00															
0264	Mud Valves	2	2	0	06AUG12	07AUG12	31AUG12	04SEP12	16	MANHOURS	3,450.00															
0245	Demolition 2	10	0	100						MANHOURS	21,025.00															
0249.41	Walls Pour 3 Reactor 1	4	4	0	10AUG12	16AUG12	07AUG12	13AUG12	-2	MANHOURS	40,200.00															
0245.4	Concrete 2	15	3	80	14AUG12	17AUG12	16AUG12	20AUG12	1	MANHOURS	24,000.00															
0249.61	Walls Pour 4 Reactor 1	2	2	0	17AUG12	20AUG12	14AUG12	16AUG12	-2	MANHOURS	64,300.00															
0249.71	Walls Pour 5 Reactor 1	2	2	0	21AUG12	23AUG12	17AUG12	20AUG12	-2	MANHOURS	64,300.00															
0249.81	Walls Pour 6 Reactor 1	1	1	0	24AUG12	24AUG12	21AUG12	21AUG12	-2	MANHOURS	32,150.00															
0270	Elec Demo	2	0	100						MANHOURS	2,400.00															
0249.85	Cure Walls	7	7	0	25AUG12	31AUG12	31AUG12	06SEP12	6		0.00															
0250.1	Walkways Reactor 1	6	6	0	27AUG12	04SEP12	23AUG12	30AUG12	-2	MANHOURS	18,350.00															
0251	Metals	5	5	0	29AUG12	06SEP12	27AUG12	31AUG12	-2	MANHOURS	6,400.00															
0252	Stairs	3	3	0	30AUG12	04SEP12	28AUG12	30AUG12	-2	MANHOURS	27,100.00															
0253	Railings	10	10	0	31AUG12	18SEP12	29AUG12	14SEP12	-2	MANHOURS	34,300.00															
0249.9	Leak Test	5	3	50	01SEP12	03SEP12	07SEP12	09SEP12	6	MANHOURS	1,000.00															
0245.6	Concrete 1	5	5	0	04SEP12	11SEP12	04SEP12	11SEP12	0	MANHOURS	24,000.00															
0254	Weir Plates	2	2	0	04SEP12	06SEP12	06SEP12	07SEP12	1	MANHOURS	4,000.00															
0250.2	Backfill	5	3	50	04SEP12	07SEP12	10SEP12	13SEP12	3	MANHOURS	2,500.00															
0245.2	Demolition 1	10	0	100						MANHOURS	19,975.00															
0256	Slide Gates Installation	5	1	75	06SEP12	06SEP12	06SEP12	06SEP12	0	MANHOURS	1,000.00															
0257	Mixers Installation	7	4	50	06SEP12	11SEP12	06SEP12	11SEP12	0	MANHOURS	15,000.00															
0258	Diffusers Installation	8	4	50	06SEP12	11SEP12	06SEP12	11SEP12	0	MANHOURS	17,000.00															
0259	Refurb Nitrate Pumps Installation	5	2	60	06SEP12	07SEP12	06SEP12	07SEP12	0	MANHOURS	7,000.00															
0261	Stainless Pipe	10	5	50	06SEP12	13SEP12	06SEP12	13SEP12	0	MANHOURS	37,800.00															
0262	Nitrate Recycle	5	4	25	06SEP12	11SEP12	06SEP12	11SEP12	0	MANHOURS	2,400.00															
0263	Plant water	5	5	0	06SEP12	13SEP12	06SEP12	13SEP12	0	MANHOURS	26,900.00															
0265	Plug Valve	2	2	0	06SEP12	07SEP12	06SEP12	07SEP12	0	MANHOURS	4,950.00															
0266	Deck Hydrant	3	2	50	06SEP12	07SEP12	06SEP12	07SEP12	0	MANHOURS	4,200.00															
0267	Butterfly Valve 4	5	5	0	06SEP12	13SEP12	06SEP12	13SEP12	0	MANHOURS	6,800.00															
0268	Butterfly Valve 6	5	5	0	06SEP12	13SEP12	06SEP12	13SEP12	0	MANHOURS	7,600.00															
0271	Conduit Power Distribution	10	0	100						MANHOURS	62,450.00															
0272	Boxes	5	1	80	07SEP12	07SEP12	04SEP12	04SEP12	-2	MANHOURS	21,300.00															
0273	Wire	5	1	80	07SEP12	07SEP12	04SEP12	04SEP12	-2	MANHOURS	37,200.00															
0271.4	Conduit Lighting, Controls & Instrumentation	5	5	0	07SEP12	14SEP12	04SEP12	11SEP12	-2	MANHOURS	62,450.00															
0277	Instrumentation	5	5	0	07SEP12	14SEP12	06SEP12	13SEP12	-1	MANHOURS	4,800.00															
0637	Field Test & Training Mixers	5	5	0	07SEP12	11SEP12	06SEP12	10SEP12	-1	MANHOURS	2,000.00															
0649	Field Test & Training Diffusers	5	5	0	07SEP12	11SEP12	06SEP12	10SEP12	-1	MANHOURS	2,000.00															
0277.2	Pt to Pt Testing	5	5	0	07SEP12	14SEP12	06SEP12	13SEP12	-1	MANHOURS	0.00															
0635	Leak Test Weir Plates	1	1	0	07SEP12	07SEP12	10SEP12	10SEP12	1	MANHOURS	1,000.00															
0647	Field Test Slide Gates	1	1	0	07SEP12	07SEP12	10SEP12	10SEP12	1	MANHOURS	1,000.00															
0255	Painting	10	5	50	07SEP12	14SEP12	11SEP12	18SEP12	2	MANHOURS	10,300.00															
0620	Field Test & Training Nitrate	5	5	0	08SEP12	12SEP12	06SEP12	10SEP12	-2	MANHOURS	2,000.00															
0274	MCC, Control Panels, Controls & PLC-AER1	10	6	41	10SEP12	18SEP12	07SEP12	17SEP12	-1	MANHOURS	18,100.00															
0269	Pipe Insulation	3	3	0	13SEP12	17SEP12	11SEP12	14SEP12	-1	MANHOURS	8,100.00															
0275	Lighting	2	1	50	13SEP12	13SEP12	11SEP12	11SEP12	-1	MANHOURS	4,100.00															
0276	Heat Trace	2	2	0	13SEP12	14SEP12	11SEP12	13SEP12	-1	MANHOURS	1,500.00															
0649.2	Clear Water Operation	3	3	0	13SEP12	17SEP12	11SEP12	14SEP12	-1	MANHOURS	500.00															
0649.4	Reliability Test	7	7	0	18SEP12	24SEP12	17SEP12	23SEP12	-1		0.00															
Reactor Aeration Gallery 1																										
0317	Chlorination Set Equipment	10	8	25	02AUG12	14AUG12	27AUG12	07SEP12	14	MANHOURS	17,000.00															
0318	SS Pipe	5	5	0	16AUG12	23AUG12	10SEP12	17SEP12	14	MANHOURS	24,300.00															
0316	Painting	5	3	50	04SEP12	07SEP12	06SEP12	10SEP12	1	MANHOURS	6,700.00															
0315.2	Demolition Piping & Valves	10	10	0	04SEP12	20SEP12	06SEP12	21SEP12	1	MANHOURS	8,500.00															
0329	Conduit	12	4	65	04SEP12	10SEP12	07SEP12	13SEP12	2	MANHOURS	32,200.00															
0315	Demolition Pumps & Tanks	10	0	100						MANHOURS	8,500.00															

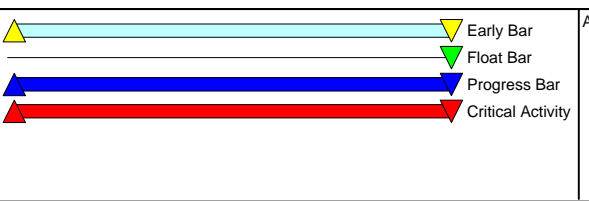
Activity ID	Activity Description	Orig Dur	Rem Dur	%	Early Start	Early Finish	Late Start	Late Finish	Total Float	Resource	Budgeted Cost	2012															
												JUL			AUG				SEP				OCT			NOV	
												16	23	30	6	13	20	27	3	10	17	24	1	8	15	22	29
0457.2	Reliability Test	14	14	0	10AUG12	23AUG12	23NOV12	06DEC12	105		0.00	Reliability Test															
Chem Feed & Process Water																											
0460	Conc Pads Includes Genset Pads	5	1	90	02AUG12	02AUG12	03AUG12	03AUG12	1	MANHOURS	1,500.00	Conc Pads Includes Genset Pads															
0466	Chem Metering PA	10	10	0	02AUG12	17AUG12	06AUG12	21AUG12	2	MANHOURS	1,000.00	Chem Metering PA															
0485	Elec Demo	1	1	50	02AUG12	02AUG12	06AUG12	06AUG12	2	MANHOURS	2,100.00	Elec Demo															
0486.4	Conduit Lighting, Controls &	20	12	40	02AUG12	21AUG12	06AUG12	24AUG12	2	MANHOURS	74,150.00	Conduit Lighting, Controls & Instrumentation															
0489	XFMR, MCC, Cntrl Pnls,	10	10	5	02AUG12	17AUG12	07AUG12	23AUG12	3	MANHOURS	15,400.00	XFMR, MCC, Cntrl Pnls, Controls, VFD & PLC-CHEM															
0471	Plant Water 6	5	5	10	02AUG12	09AUG12	09AUG12	16AUG12	4	MANHOURS	10,700.00	Plant Water 6															
0470	Comp Air 1	3	3	0	02AUG12	06AUG12	13AUG12	16AUG12	6	MANHOURS	2,800.00	Comp Air 1															
0467	Air compressor Equip	10	10	0	02AUG12	17AUG12	16AUG12	30AUG12	8	MANHOURS	2,400.00	Air compressor Equip															
0468	Plant Water	20	10	50	02AUG12	17AUG12	16AUG12	30AUG12	8	MANHOURS	21,000.00	Plant Water															
0469	Comp Air .75	1	1	0	02AUG12	02AUG12	16AUG12	16AUG12	8	MANHOURS	100.00	Comp Air .75															
0459	Demolition	10	0	100						MANHOURS	13,900.00	Demolition															
0486	Conduit Power Distribution	10	0	100						MANHOURS	74,150.00	Conduit Power Distribution															
0487	Boxes	5	0	100						MANHOURS	16,900.00	Boxes															
0488	Wire	15	0	100						MANHOURS	61,300.00	Wire															
0461	Masonry	3	3	0	03AUG12	07AUG12	06AUG12	09AUG12	1	MANHOURS	2,200.00	Masonry															
0491	Instrumentation	10	10	0	03AUG12	20AUG12	07AUG12	23AUG12	2	MANHOURS	24,000.00	Instrumentation															
0491.2	Pt to Pt Testing	10	10	0	03AUG12	20AUG12	07AUG12	23AUG12	2		0.00	Pt to Pt Testing															
0490	Generator	5	3	50	03AUG12	07AUG12	13AUG12	16AUG12	5	MANHOURS	20,300.00	Generator															
0484	HVAC	15	15	0	03AUG12	28AUG12	14AUG12	07SEP12	6	MANHOURS	31,200.00	HVAC															
0491.4	Chemical Feed SCADA	14	14	0	04AUG12	17AUG12	12AUG12	25AUG12	8		0.00	Chemical Feed SCADA Programming															
0472	Plant Water 8	2	2	0	07AUG12	09AUG12	14AUG12	16AUG12	4	MANHOURS	4,800.00	Plant Water 8															
0473	Plant Water 10	10	6	40	07AUG12	16AUG12	14AUG12	23AUG12	4	MANHOURS	31,200.00	Plant Water 10															
0474	Plant Drain	2	2	0	07AUG12	09AUG12	14AUG12	16AUG12	4	MANHOURS	4,500.00	Plant Drain															
0475	Potable water	3	3	0	07AUG12	10AUG12	14AUG12	17AUG12	4	MANHOURS	3,200.00	Potable water															
0479	Swing Check Valve 6	2	2	0	07AUG12	09AUG12	14AUG12	16AUG12	4	MANHOURS	1,650.00	Swing Check Valve 6															
0480	Swing Check Valve 8	2	2	0	07AUG12	09AUG12	14AUG12	16AUG12	4	MANHOURS	2,050.00	Swing Check Valve 8															
0476	Service Sink	2	2	0	07AUG12	09AUG12	16AUG12	17AUG12	5	MANHOURS	1,400.00	Service Sink															
0477	Eyewash	2	2	0	07AUG12	09AUG12	16AUG12	17AUG12	5	MANHOURS	7,600.00	Eyewash															
0462	Metals	5	5	0	09AUG12	16AUG12	10AUG12	17AUG12	1	MANHOURS	7,900.00	Metals															
0482	Gate valve 8	2	2	25	09AUG12	10AUG12	16AUG12	17AUG12	4	MANHOURS	1,050.00	Gate valve 8															
0483	Gate Valve 10	2	2	0	09AUG12	10AUG12	16AUG12	17AUG12	4	MANHOURS	1,433.00	Gate Valve 10															
0621	Generator Field Testing &	1	1	0	09AUG12	09AUG12	17AUG12	17AUG12	5	MANHOURS	1,000.00	Generator Field Testing & Training															
0657.2	Owner Provide Chemicals	1	1	0	09AUG12	09AUG12	17AUG12	17AUG12	5		0.00	Owner Provide Chemicals															
0481	Gate Valve 6	2	1	50	10AUG12	10AUG12	17AUG12	17AUG12	4	MANHOURS	725.00	Gate Valve 6															
0478	Chem Feed Piping	5	5	0	10AUG12	17AUG12	31AUG12	10SEP12	13	MANHOURS	10,200.00	Chem Feed Piping															
0463	Blocking	2	2	0	14AUG12	16AUG12	16AUG12	17AUG12	1	MANHOURS	400.00	Blocking															
0464	Roofing	5	5	0	14AUG12	21AUG12	16AUG12	23AUG12	1	MANHOURS	4,300.00	Roofing															
0465	Painting	10	10	0	14AUG12	29AUG12	16AUG12	30AUG12	1	MANHOURS	9,000.00	Painting															
0658	Chemical Metering Field Testing	10	10	0	15AUG12	24AUG12	18AUG12	27AUG12	3	MANHOURS	1,300.00	Chemical Metering Field Testing & Training															
0492	Start-up	3	3	0	17AUG12	21AUG12	20AUG12	23AUG12	1	MANHOURS	3,200.00	Start-up															
0492.2	Reliability Test	14	14	0	22AUG12	04SEP12	24AUG12	06SEP12	2		0.00	Reliability Test															
Methanol Feed Storage																											
0496	Fiberglass Buildings	5	5	0	02AUG12	09AUG12	03AUG12	10AUG12	1	MANHOURS	27,100.00	Fiberglass Buildings															
0497	Methanol Pumps Installation	10	3	70	02AUG12	06AUG12	03AUG12	07AUG12	1	MANHOURS	29,000.00	Methanol Pumps Installation															
0498	Storage Tank	5	1	75	02AUG12	02AUG12	03AUG12	03AUG12	1	MANHOURS	14,000.00	Storage Tank															
0499	ADT Ducting	10	10	0	02AUG12	17AUG12	03AUG12	20AUG12	1	MANHOURS	60,000.00	ADT Ducting															
0500	ADT Pipe	5	1	75	02AUG12	02AUG12	03AUG12	03AUG12	1	MANHOURS	33,300.00	ADT Pipe															
0507	Brkrs, Control Pnes, Controls,	1	0	60	02AUG12	31JUL12	03AUG12	02AUG12	1	MANHOURS	22,300.00	Brkrs, Control Pnes, Controls, XFMR's & PLC-METH															
0508	Conduit	10	3	70	02AUG12	06AUG12	03AUG12	07AUG12	1	MANHOURS	25,900.00	Conduit															
0509	Boxes	4	3	25	02AUG12	06AUG12	03AUG12	07AUG12	1	MANHOURS	2,100.00	Boxes															
0510	Wire	5	3	35	02AUG12	06AUG12	03AUG12	07AUG12	1	MANHOURS	21,700.00	Wire															
0513	Instrumentation	3	3	0	02AUG12	06AUG12	03AUG12	07AUG12	1	MANHOURS	12,000.00	Instrumentation															
0667	Methanol Equipment	3	3	0	02AUG12	06AUG12	03AUG12	07AUG12	1	MANHOURS	10,000.00	Methanol Equipment															
0511	Lighting	5	5	0	02AUG12	09AUG12	06AUG12	13AUG12	2	MANHOURS	1,800.00	Lighting															
0494	Excavation	5	0	100						MANHOURS	32,100.00	Excavation															

Activity ID	Activity Description	Orig Dur	Rem Dur	%	Early Start	Early Finish	Late Start	Late Finish	Total Float	Resource	Budgeted Cost	2012															
												JUL			AUG				SEP				OCT			NOV	
												16	23	30	6	13	20	27	3	10	17	24	1	8	15	22	29
0495	Conc Pads	10	0	100						MANHOURS	4,300.00	▼ Conc Pads															
0501	SS Pipe 1	5	5	0	03AUG12	10AUG12	06AUG12	13AUG12	1	MANHOURS	3,500.00	▼ SS Pipe 1															
0502	SS Pipe 2	2	2	0	03AUG12	06AUG12	06AUG12	07AUG12	1	MANHOURS	2,400.00	▼ SS Pipe 2															
0503	SS Pipe 4	5	5	0	03AUG12	10AUG12	06AUG12	13AUG12	1	MANHOURS	4,100.00	▼ SS Pipe 4															
0504	Eyewash	5	5	0	03AUG12	10AUG12	06AUG12	13AUG12	1	MANHOURS	15,200.00	▼ Eyewash															
0505	Potable Water	3	2	50	03AUG12	06AUG12	06AUG12	07AUG12	1	MANHOURS	3,200.00	▼ Potable Water															
0506	Pipe insulation	3	3	0	03AUG12	07AUG12	06AUG12	09AUG12	1	MANHOURS	5,300.00	▼ Pipe insulation															
0512	Heat Trace	2	2	0	03AUG12	06AUG12	06AUG12	07AUG12	1	MANHOURS	2,300.00	▼ Heat Trace															
0514	Start-up	5	5	0	03AUG12	10AUG12	06AUG12	13AUG12	1	MANHOURS	3,200.00	▼ Start-up															
0668	Methanol Pump Field Testing &	3	3	0	03AUG12	07AUG12	06AUG12	09AUG12	1	MANHOURS	1,100.00	▼ Methanol Pump Field Testing & Training															
0669	Storage tank Field Testing	3	3	0	03AUG12	07AUG12	06AUG12	09AUG12	1	MANHOURS	1,000.00	▼ Storage tank Field Testing															
0513.2	Pt to Pt Testing	2	2	0	03AUG12	06AUG12	06AUG12	07AUG12	1		0.00	▼ Pt to Pt Testing															
0514.2	Reliability Test	14	14	0	11AUG12	24AUG12	14AUG12	27AUG12	3		0.00	▼ Reliability Test															
Chlorine Contact Tank																											
0516	Demolition	5	5	0	06AUG12	13AUG12	29AUG12	06SEP12	14	MANHOURS	3,700.00	▼ Demolition															
0517	Excavation	2	1	50	10AUG12	10AUG12	04SEP12	04SEP12	14	MANHOURS	9,300.00	▼ Excavation															
0519	DIP 10	1	1	50	13AUG12	13AUG12	06SEP12	06SEP12	14	MANHOURS	900.00	▼ DIP 10															
0518	Concrete	1	0	100						MANHOURS	700.00	▼ Concrete															
0520	DIP 36	5	0	100						MANHOURS	3,200.00	▼ DIP 36															
Primary Clarifiers 1 & 2																											
0522	Demolition #1	3	0	100						MANHOURS	2,450.00	▼ Demolition #1															
0523	Concrete #1	3	0	100						MANHOURS	1,350.00	▼ Concrete #1															
0522.4	Demolition #2	3	0	100						MANHOURS	2,450.00	▼ Demolition #2															
0523.4	Concrete #2	3	0	100						MANHOURS	1,350.00	▼ Concrete #2															
Sodium Hydroxide																											
0536	Excavation	5	1	90	02AUG12*	02AUG12	20AUG12	20AUG12	10	MANHOURS	14,500.00	▼ Excavation															
0547	Eyewash	2	2	0	02AUG12	03AUG12	04SEP12	06SEP12	19	MANHOURS	7,600.00	▼ Eyewash															
0541	FRP Grating	5	5	0	03AUG12	10AUG12	29AUG12	06SEP12	15	MANHOURS	9,300.00	▼ FRP Grating															
0548	Plant Drain	1	1	50	03AUG12	03AUG12	06SEP12	06SEP12	19	MANHOURS	900.00	▼ Plant Drain															
0549	Potable water	3	1	62	03AUG12	03AUG12	06SEP12	06SEP12	19	MANHOURS	3,200.00	▼ Potable water															
0545	FRP Tank	2	0	95	03AUG12	02AUG12	10SEP12	07SEP12	21	MANHOURS	4,400.00	▼ FRP Tank															
0656	FRP Tank Field Testing	5	5	0	03AUG12	10AUG12	10SEP12	17SEP12	21	MANHOURS	500.00	▼ FRP Tank Field Testing															
0537	Conc Slab	5	0	100						MANHOURS	18,200.00	▼ Conc Slab															
0538	Tank Foundation	10	0	100						MANHOURS	8,100.00	▼ Tank Foundation															
0539	Walls & Columns	10	0	100						MANHOURS	15,300.00	▼ Walls & Columns															
0542	Coatings	10	0	100						MANHOURS	8,100.00	▼ Coatings															
0543	Painting	5	0	100						MANHOURS	5,300.00	▼ Painting															
0546	Metal Building	5	0	100						MANHOURS	33,700.00	▼ Metal Building															
0550	Plant water	3	3	0	06AUG12	09AUG12	07SEP12	11SEP12	19	MANHOURS	2,100.00	▼ Plant water															
0557	Heat Trace	1	1	0	10AUG12	10AUG12	13SEP12	13SEP12	19	MANHOURS	3,300.00	▼ Heat Trace															
0544	Chem Metering Pumps	5	1	75	10AUG12	10AUG12	14SEP12	14SEP12	20	MANHOURS	2,700.00	▼ Chem Metering Pumps															
0540	Railing	2	2	0	13AUG12	14AUG12	07SEP12	10SEP12	15	MANHOURS	4,700.00	▼ Railing															
0551	Pipe insulation	2	2	0	13AUG12	14AUG12	14SEP12	17SEP12	19	MANHOURS	5,600.00	▼ Pipe insulation															
0665	Chemical Feed Pump Field Test	1	1	0	13AUG12	13AUG12	17SEP12	17SEP12	20	MANHOURS	500.00	▼ Chemical Feed Pump Field Test & Training															
0558	Instrumentation	5	4	25	16AUG12	21AUG12	11SEP12	17SEP12	15	MANHOURS	12,000.00	▼ Instrumentation															
0552	Panels, Controls & Control	1	0	100						MANHOURS	2,300.00	▼ Panels, Controls & Control Panels															
0553	Conduit	10	0	100						MANHOURS	25,800.00	▼ Conduit															
0554	Boxes	2	0	100						MANHOURS	3,900.00	▼ Boxes															
0555	Wire	5	0	100						MANHOURS	9,700.00	▼ Wire															
0556	Lighting	1	0	100						MANHOURS	1,900.00	▼ Lighting															
0559	Start-up	3	3	0	23AUG12	27AUG12	18SEP12	21SEP12	15	MANHOURS	3,200.00	▼ Start-up															
0559.2	Reliability Test	14	14	0	28AUG12	10SEP12	23SEP12	06OCT12	26		0.00	▼ Reliability Test															
EQ Electrical Building																											
0561	Excavation	10	6	40	02AUG12	10AUG12	03AUG12	13AUG12	1	MANHOURS	19,000.00	▼ Excavation															
0573	Switchgear, Control Panels,	15	7	55	02AUG12	13AUG12	24AUG12	04SEP12	13	MANHOURS	26,300.00	▼ Switchgear, Control Panels, PLC1EQ & MCC															
0562	Conc Foundations	5	5	0	09AUG12	16AUG12	10AUG12	17AUG12	1	MANHOURS	7,000.00	▼ Conc Foundations															
0563	Walls	5	5	0	14AUG12	21AUG12	16AUG12	23AUG12	1	MANHOURS	19,400.00	▼ Walls															

Activity ID	Activity Description	Orig Dur	Rem Dur	%	Early Start	Early Finish	Late Start	Late Finish	Total Float	Resource	Budgeted Cost	2012																	
												JUL	AUG			SEP			OCT			NOV							
0613	Boxes	1	0	100						MANHOURS	1,400.00	.16	.23	.30	.6	.13	.20	.27	.3	.10	.17	.24	.1	.8	.15	.22	.29	.5	.12
0614	Wire	5	0	100						MANHOURS	23,500.00																		
0615.2	Pt to Pt Testing	2	2	0	11SEP12	13SEP12	04OCT12	05OCT12	13		0.00																		
0005.2	Plant Operational	40	40	0	08OCT12	16NOV12	28OCT12	06DEC12	20		0.00																		



Start Date 04JUN10
 Finish Date 16NOV12
 Data Date 01AUG12
 Run Date 03AUG12 13:27



AB20
 Wickersham Construction
 Aberdeen WWTP

Sheet 20 of 20

Date	Revision	Checked	Approved
01AUG12	7/31/12 Update		