

Activity ID	Activity Description	Orig Dur	Rem Dur	%	Early Start	Early Finish	Late Start	Late Finish	Total Float	Resource	Budgeted Cost	2012												
												MAY 28	MAY 4	JUN 11	JUN 18	JUN 25	JUL 2	JUL 9	JUL 16	JUL 23	JUL 30	AUG 6	AUG 13	AUG 20
<b>ADMINISTRATIVE ACTIVITIES</b>																								
<b>ADMINISTRATIVE</b>																								
<b>ADMINISTRATIVE</b>																								
<b>Mobilization</b>																								
0002	Notice to Proceed	0	0	100							0.00	◆ Notice to Proceed												
0003	Inspector's Trailer	15	0	100						MANHOURS	8,000.00	⚠ Inspector's Trailer												
0004	Contractor Mobilization	21	0	100						MANHOURS	921,000.00	⚠ Contractor Mobilization												
0685	Substantial Completion	0	0	0		09SEP12		09SEP12*	0		0.00	◆ Substantial Completion												
0005	Demobilization	10	10	0	10SEP12	25SEP12	26OCT12	09NOV12	27	MANHOURS	24,000.00	Demobilization												
0695	Final Completion	0	0	0		19OCT12		09NOV12*	21		0.00	◆ Final Completion												
<b>PROCUREMENT</b>																								
<b>PROCUREMENT</b>																								
<b>SUBMITTALS</b>																								
<b>Submittals</b>																								
0007	Reinf. Shops- Overhead Air Line	67	0	100							0.00	⚠ Reinf. Shops- Overhead Air Line												
0008	Manholes Shops	65	0	100							0.00	⚠ Manholes Shops												
0009	Precast Building Shops	80	0	100							0.00	⚠ Precast Building Shops												
0010	Metal Building Shops	90	0	100							0.00	⚠ Metal Building Shops												
0011	Misc. Metals Shops	75	0	100							0.00	⚠ Misc. Metals Shops												
0012	Power Study- Section 16060	60	0	100						MANHOURS	18,000.00	⚠ Power Study- Section 16060												
0013	Transformers Shops	60	0	100							0.00	⚠ Transformers Shops												
0014	Switchgear, Panels, Overcurrent,	60	0	100							0.00	⚠ Switchgear, Panels, Overcurrent, MCC & VFD Shops												
0015	Generators & Transfer Switches	60	0	100							0.00	⚠ Generators & Transfer Switches Shops												
0016	RAS Pumps Shops	90	0	100							0.00	⚠ RAS Pumps Shops												
0017	Mixers Shops	90	0	100							0.00	⚠ Mixers Shops												
0018	Chemical Pumps Shops	70	0	100							0.00	⚠ Chemical Pumps Shops												
0019	Chem Storage Tanks Shops	70	0	100							0.00	⚠ Chem Storage Tanks Shops												
0020	Blowers Shops	110	0	100							0.00	⚠ Blowers Shops												
0021	Refurbish Pumps Shops	60	0	100							0.00	⚠ Refurbish Pumps Shops												
0022	Screen Shops	95	0	100							0.00	⚠ Screen Shops												
0023	Denitrification Shops	120	0	100							0.00	⚠ Denitrification Shops												
0024	UV Equipment Shops	70	0	100							0.00	⚠ UV Equipment Shops												
0025	Methanol System Shops	80	0	100							0.00	⚠ Methanol System Shops												
0026	Valves Shops	90	0	100							0.00	⚠ Valves Shops												
0027	Yard Piping Shops	70	0	100							0.00	⚠ Yard Piping Shops												
0028	Instrumentation Shops	120	0	100							0.00	⚠ Instrumentation Shops												
0031	Disconnects	21	0	100							0.00	⚠ Disconnects												
0041	Heat Trace	21	0	100							0.00	⚠ Heat Trace												
0622	Sluice Gates Shops	90	0	100							0.00	⚠ Sluice Gates Shops												
0632	Diffusers Shops	90	0	100							0.00	⚠ Diffusers Shops												
0642	Submersible Pumps Shops	90	0	100							0.00	⚠ Submersible Pumps Shops												
0688	Wire and Conduit Shops	45	0	100							0.00	⚠ Wire and Conduit Shops												
0718	Reinf. Shops- Equal. Pump Sta.	75	0	100							0.00	⚠ Reinf. Shops- Equal. Pump Sta.												
0728	Reinf. Shops- Equal. Tanks 1 & 2	55	0	100							0.00	⚠ Reinf. Shops- Equal. Tanks 1 & 2												
0738	Reinf. Shops- PE/RAS Box	55	0	100							0.00	⚠ Reinf. Shops- PE/RAS Box												
0748	Reinf. Shops- Reactors 1 & 2	55	0	100							0.00	⚠ Reinf. Shops- Reactors 1 & 2												
0758	Reinf. Shops- Reactors 3 & 4	85	0	100							0.00	⚠ Reinf. Shops- Reactors 3 & 4												
0768	Reinf. Shops- Denitrification	74	0	100							0.00	⚠ Reinf. Shops- Denitrification												
0778	Reinf. Shops- Rapid Mix	79	0	100							0.00	⚠ Reinf. Shops- Rapid Mix												
0788	Reinf. Shops- Sodium Hydroxide	85	0	100							0.00	⚠ Reinf. Shops- Sodium Hydroxide												
0798	Reinf. Shops- Equal Elect. Bldg.	85	0	100							0.00	⚠ Reinf. Shops- Equal Elect. Bldg.												
0808	Reinf. Shops- U.V. Tank	95	0	100							0.00	⚠ Reinf. Shops- U.V. Tank												
0957	Steel Sheet Piping Shops	85	0	100							0.00	⚠ Steel Sheet Piping Shops												
0967	Auger Cast Pile Shops	85	0	100							0.00	⚠ Auger Cast Pile Shops												
0977	Paving Material Shops	85	0	100							0.00	⚠ Paving Material Shops												
0987	Seeding Shops	95	0	100							0.00	⚠ Seeding Shops												



Activity ID	Activity Description	Orig Dur	Rem Dur	%	Early Start	Early Finish	Late Start	Late Finish	Total Float	Resource	Budgeted Cost	2012																									
												MAY	JUN					JUL					AUG				SEP				OCT				NOV		
0957A	Steel Sheet Piping Shops	14	0	100							0.00	MAY 28	JUN 4	JUN 11	JUN 18	JUN 25	JUL 2	JUL 9	JUL 16	JUL 23	JUL 30	AUG 6	AUG 13	AUG 20	AUG 27	SEP 3	SEP 10	SEP 17	SEP 24	OCT 1	OCT 8	OCT 15	OCT 22	OCT 29	NOV 5	NOV 12	
0967A	Auger Cast Pile Shops	14	0	100							0.00																										
0977A	Paving Material Shops	14	0	100							0.00																										
0997A	Concrete Material Shops	14	0	100							0.00																										
1027A	Tablet Chlorinator Shops	14	0	100							0.00																										
1037A	Rapid Mixer Shops	14	0	100							0.00																										
1047A	Plant Water System Shops	14	0	100							0.00																										
1067A	Davit Crane Shops	14	0	100							0.00																										
1077A	Monorail Hoist Shops	14	0	100							0.00																										
1087A	Above Grade Piping Shops	14	0	100							0.00																										
1097A	HVAC Equipment Shops	14	0	100							0.00																										
1107A	Light Fixture Shops	14	0	100							0.00																										
0003.2A	Approve Bypass Pumping Plan	14	14	0	13JUL12	26JUL12	27OCT12	09NOV12	106		0.00																										

**FABRICATE & DELIVER**

**Submittals**

50041	Heat Trace Cabling F & D	20	2	90	01JUN12	02JUN12	10JUN12	11JUN12	9	MANHOURS	7,000.00																												
51237	Monorail Hoist F & D	100	50	50	01JUN12	20JUL12	11JUN12	30JUL12	10		0.00																												
50847	Screens F & D	140	28	80	01JUN12	28JUN12	12JUN12	09JUL12	11	MANHOURS	380,976.25																												
51197	Rapid Mixer F & D	250	63	75	01JUN12	02AUG12	14JUN12	15AUG12	13		0.00																												
51357	Reinf. Sodium Hydroxide- F & D	8	8	0	01JUN12	08JUN12	21JUN12	28JUN12	20		0.00																												
50937	Submersible Pumps F & D	100	20	80	01JUN12	20JUN12	22JUN12	11JUL12	21	MANHOURS	561,000.00																												
51227	Davit crane F & D	100	30	70	01JUN12	30JUN12	26JUN12	25JUL12	25		0.00																												
50739	Chem Storage Tanks- F & D	150	45	70	01JUN12	15JUL12	29JUN12	12AUG12	28	MANHOURS	100,000.00																												
51187	Tablet Chlorinator F & D	200	20	90	01JUN12	20JUN12	29JUN12	18JUL12	28		0.00																												
51137	Paving Material F & D	10	10	0	01JUN12	10JUN12	17JUL12	26JUL12	46		0.00																												
51257	HVAC Equipment F & D	80	40	50	01JUN12	10JUL12	19JUL12	27AUG12	48		15,000.00																												
0042	PLC Panels & Instrumentation	60	0	100						MANHOURS	715,976.25																												
50031	Disconnects F & D	21	0	100						MANHOURS	12,800.00																												
50707	Reinf. Overhead Air Line- F & D	8	0	100							0.00																												
50717	Manholes F & D	20	0	100							0.00																												
50737	Metal Building F & D	50	0	100							0.00																												
50767	Transformer F & D	60	0	100							69,200.00																												
50777	Switchgear, Panels, Overcurrent,	40	0	100							375,900.00																												
50797	RAS Pumps F & D	100	0	100						MANHOURS	315,000.00																												
50807	Mixers F & D	100	0	100						MANHOURS	727,976.25																												
50817	Chemical Pumps F & D	130	0	100						MANHOURS	136,000.00																												
50827	Blowers F & D	150	0	100						MANHOURS	36,000.00																												
50837	Refurbish Pumps F & D	40	0	100						MANHOURS	170,000.00																												
50857	Denitrification F & D	120	0	100						MANHOURS	1,076,376.25																												
50867	UV Equipment F & D	200	0	100						MANHOURS	698,000.00																												
50877	Methanol System F & D	150	0	100						MANHOURS	290,000.00																												
50917	Sluice Gates F & D	40	0	100						MANHOURS	115,000.00																												
50927	Diffusers F & D	100	0	100						MANHOURS	216,000.00																												
50947	Wire & Conduit F & D	40	0	100							0.00																												
51117	Steel Sheet Piling F & D	20	0	100							0.00																												
51127	Auger Cast Pile F & D	20	0	100							0.00																												
51157	Concrete Material F & D	3	0	100							0.00																												
51207	Plant Water System F & D	175	0	100							0.00																												
51247	Above Grade Piping F & D	30	0	100							0.00																												
51267	Light Fixture F & D	80	0	100							0.00																												
51287	Reinf. Equal Pump Sta.- F & D	10	0	100							0.00																												
51297	Reinf. Equal Tanks 1 & 2	10	0	100							0.00		</																										

Activity ID	Activity Description	Orig Dur	Rem Dur	%	Early Start	Early Finish	Late Start	Late Finish	Total Float	Resource	Budgeted Cost	2012																									
												MAY	JUN					JUL					AUG					SEP					OCT				
													28	4	11	18	25	2	9	16	23	30	6	13	20	27	3	10	17	24	1	8	15	22	29	5	12
51367	Reinf. Equal Elect. Bldg.- F & D	10	0	100							0.00	⚠	Reinf. Equal Elect. Bldg.- F & D																								
51377	Reinf. U.V. Tank- F & D	10	0	100							0.00	⚠	Reinf. U.V. Tank- F & D																								
50747	Misc. Metals F & D	20	20	0	02JUN12	21JUN12	12OCT12	31OCT12	132		0.00	▶	Misc. Metals F & D																								
50897	Yard Piping F & D	40	0	100							0.00	⚠	Yard Piping F & D																								
50727	Precast Building F & D	60	15	75	04JUN12	18JUN12	10JUN12	24JUN12	6		0.00	▶	Precast Building F & D																								
50787	Generators & Transfer Switches	40	12	70	15JUN12	26JUN12	01JUL12	12JUL12	16		75,000.00	▶	Generators & Transfer Switches F & D																								
50887	Valves F & D	40	40	0	15JUN12	24JUL12	01JUL12	09AUG12	16		71,000.00	▶	Valves F & D																								
51147	Seeding F & D	10	10	0	15JUN12	24JUN12	20JUL12	29JUL12	35		0.00	▶	Seeding F & D																								
51167	Painting F & D	15	15	0	15JUN12	29JUN12	22JUL12	05AUG12	37		0.00	▶	Painting F & D																								
51217	Misc Equipment F & D	30	30	0	15JUN12	14JUL12	02OCT12	31OCT12	109		0.00	▶	Misc Equipmen																								

**O & M MANUALS**

**PRELIMINARY DRAFT**

**Main Pumping Station**

0779	Screen- Prelim. Draft O & M	30	0	100							0.00	⚠	Screen- Prelim. Draft O & M																							
------	-----------------------------	----	---	-----	--	--	--	--	--	--	------	---	-----------------------------	--	--	--	--	--	--	--	--	--	--	--	--	--	--	--	--	--	--	--	--	--	--	--

**EQ Pump Station**

0719	EQ Pumps- Prelim. Draft O & M	30	0	100							0.00	⚠	EQ Pumps- Prelim. Draft O & M																							
------	-------------------------------	----	---	-----	--	--	--	--	--	--	------	---	-------------------------------	--	--	--	--	--	--	--	--	--	--	--	--	--	--	--	--	--	--	--	--	--	--	--

**Reactors 3&4**

0675	Mixer- Prelim. Draft O & M	30	30	0	01JUN12	30JUN12	12AUG12	10SEP12	72		0.00	▶	Mixer- Prelim. Draft O & M																							
0735	Diffuser- Prelim. Draft O & M	30	30	0	01JUN12	30JUN12	12AUG12	10SEP12	72		0.00	▶	Diffuser- Prelim. Draft O & M																							
0755	Nitrate Pump- Prelim. Draft O & M	30	30	0	01JUN12	30JUN12	12AUG12	10SEP12	72		0.00	▶	Nitrate Pump- Prelim. Draft O & M																							
0775	Davit Crane- Prelim. Draft O & M	30	30	0	01JUN12	30JUN12	12AUG12	10SEP12	72		0.00	▶	Davit Crane- Prelim. Draft O & M																							

**Reactor Aeration Gallery 1**

0524	RAS Pumps- Prelim. Draft O & M	30	0	100							0.00	⚠	RAS Pumps- Prelim. Draft O & M																							
0664	Chlorination- Prelim. Draft O & M	30	0	100							0.00	⚠	Chlorination- Prelim. Draft O & M																							

**Reactor Aeration Gallery 2**

0686	Valve Operator- Prelim. Draft O & M	30	0	100							0.00	⚠	Valve Operator- Prelim. Draft O & M																							
------	-------------------------------------	----	---	-----	--	--	--	--	--	--	------	---	-------------------------------------	--	--	--	--	--	--	--	--	--	--	--	--	--	--	--	--	--	--	--	--	--	--	--

**Denitrification Filter Facility**

0677	Denitrification Equip.- Prelim.	30	0	100							0.00	⚠	Denitrification Equip.- Prelim. Draft O & M																							
------	---------------------------------	----	---	-----	--	--	--	--	--	--	------	---	---	--	--	--	--	--	--	--	--	--	--	--	--	--	--	--	--	--	--	--	--	--	--	--

**Rapid Mix Chamber**

0666	Rapid Mixer- Prelim. Draft O & M	30	0	100							0.00	⚠	Rapid Mixer- Prelim. Draft O & M																							
------	----------------------------------	----	---	-----	--	--	--	--	--	--	------	---	----------------------------------	--	--	--	--	--	--	--	--	--	--	--	--	--	--	--	--	--	--	--	--	--	--	--

**Grit Removal Facility**

0650	Sluice Gate- Prelim. Draft O & M	30	30	0	01JUN12	30JUN12	09JUN12	08JUL12	8		0.00	▶	Sluice Gate- Prelim. Draft O & M																							
0680	Blower- Prelim. Draft O & M	30	30	0	01JUN12	30JUN12	12JUN12	11JUL12	11		0.00	▶	Blower- Prelim. Draft O & M																							

**Admin. Chem Feec**

0739	Chem Feed Pumps- Prelim. Draft	30	0	100							0.00	⚠	Chem Feed Pumps- Prelim. Draft O & M																							
------	--------------------------------	----	---	-----	--	--	--	--	--	--	------	---	--------------------------------------	--	--	--	--	--	--	--	--	--	--	--	--	--	--	--	--	--	--	--	--	--	--	--

**Chem Feed & Process Water**

0698	Plant Water System- Prelim. Draft	30	0	100							0.00	⚠	Plant Water System- Prelim. Draft O & M																							
------	-----------------------------------	----	---	-----	--	--	--	--	--	--	------	---	---	--	--	--	--	--	--	--	--	--	--	--	--	--	--	--	--	--	--	--	--	--	--	--

**Methanol Feed Storage**

0759	Methanol System- Prelim. Draft O	30	0	100							0.00	⚠	Methanol System- Prelim. Draft O & M																							
------	----------------------------------	----	---	-----	--	--	--	--	--	--	------	---	--------------------------------------	--	--	--	--	--	--	--	--	--	--	--	--	--	--	--	--	--	--	--	--	--	--	--

**Sodium Hydroxide**

0715	FRP Tank- Prelim. Draft O & M	30	0	100							0.00	⚠	FRP Tank- Prelim. Draft O & M																							
------	-------------------------------	----	---	-----	--	--	--	--	--	--	------	---	-------------------------------	--	--	--	--	--	--	--	--	--	--	--	--	--	--	--	--	--	--	--	--	--	--	--

**EQ Electrical Building**

0818	HVAC Equip.- Prelim. Draft O & M	30	0	100						MANHOURS	0.00	⚠	HVAC Equip.- Prelim. Draft O & M																							
------	----------------------------------	----	---	-----	--	--	--	--	--	----------	------	---	----------------------------------	--	--	--	--	--	--	--	--	--	--	--	--	--	--	--	--	--	--	--	--	--	--	--

**UV Disinfection Facility**

0799	UV Equip.- Prelim. Draft O & M	30	0	100	01OCT11A	30OCT11A	01OCT11A	30OCT11A			0.00																									
0819	Hoist- Prelim. Draft O & M	30	0	100	01OCT11A	30OCT11A	01OCT11A	30OCT11A			0.00																									

**FINAL DRAFT**

**Main Pumping Station**

0779A	Screen- Final Draft O & M	30	0	100							0.00	⚠	Screen- Final Draft O & M																							
-------	---------------------------	----	---	-----	--	--	--	--	--	--	------	---	---------------------------	--	--	--	--	--	--	--	--	--	--	--	--	--	--	--	--	--	--	--	--	--	--	--

**EQ Pump Station**

0719A	EQ Pumps- Final Draft O & M	30	30	0	01JUN12	30JUN12	24JUN12	23JUL12	23		0.00	▶	EQ Pumps- Final Draft O & M																							
-------	-----------------------------	----	----	---	---------	---------	---------	---------	----	--	------	---	-----------------------------	--	--	--	--	--	--	--	--	--	--	--	--	--	--	--	--	--	--	--	--	--	--	--

**Reactors 3&4**

0675A	Mixer- Final Draft O & M	30	30	0	01JUL12	30JUL12	11SEP12	10OCT12	72		0.00	▶	Mixer- Final Draft O & M																							
0735A	Diffuser- Final Draft O & M	30	30	0	01JUL12	30JUL12	11SEP12	10OCT12	72		0.00	▶	Diffuser- Final Draft O & M																							
0755A	Nitrate Pump- Final Draft O & M	30	30	0	01JUL12	30JUL12	11SEP12	10OCT12	72		0.00	▶	Nitrate Pump- Final Draft O & M																							
0775A	Davit Crane- Final Daft O & M	30	30	0	01JUL12	30JUL12	11SEP12	10OCT12	72		0.00	▶	Davit Crane- Final Daft O & M																							



Activity ID	Activity Description	Orig Dur	Rem Dur	%	Early Start	Early Finish	Late Start	Late Finish	Total Float	Resource	Budgeted Cost	2012																								
												MAY 28	MAY 4	JUN 11	JUN 18	JUN 25	JUN 2	JUL 9	JUL 16	JUL 23	JUL 30	AUG 6	AUG 13	AUG 20	AUG 27	SEP 3	SEP 10	SEP 17	SEP 24	OCT 1	OCT 8	OCT 15	OCT 22	OCT 29	NOV 5	NOV 12
<b>Reactor Aeration Gallery 1</b>																																				
0524A	RAS Pumps- Final Draft O & M	30	30	0	01JUN12	30JUN12	22JUN12	21JUL12	21		0.00	▼RAS Pumps- Final Draft O & M																								
0664A	Chlorination- Final Draft O & M	30	30	0	01JUN12	30JUN12	22JUN12	21JUL12	21		0.00	▼Chlorination- Final Draft O & M																								
<b>Reactor Aeration Gallery 2</b>																																				
0686A	Valve Operator- Final Draft O & M	30	30	0	01JUN12	30JUN12	18JUN12	17JUL12	17		0.00	▼Valve Operator- Final Draft O & M																								
<b>Denitrification Filter Facility</b>																																				
0677A	Denitrification Equip.- Final Draft	30	30	0	01JUN12	30JUN12	02JUN12	01JUL12	1		0.00	▼Denitrification Equip.- Final Draft O & M																								
<b>Rapid Mix Chamber</b>																																				
0666A	Rapid Mixer- Final Draft O & M	30	30	0	01JUN12	30JUN12	21JUN12	20JUL12	20		0.00	▼Rapid Mixer- Final Draft O & M																								
<b>Grit Removal Facility</b>																																				
0650A	Sluice Gate- Final Draft O & M	30	30	0	01JUL12	30JUL12	09JUL12	07AUG12	8		0.00	▼Sluice Gate- Final Draft O & M																								
0680A	Blower- Fnal Draft O & M	30	30	0	01JUL12	30JUL12	12JUL12	10AUG12	11		0.00	▼Blower- Fnal Draft O & M																								
<b>Admin. Chem Feec</b>																																				
0739A	Chem Feed Pumps- Fial Draft O	30	0	100							0.00	▼Chem Feed Pumps- Fial Draft O & M																								
<b>Chem Feed &amp; Process Water</b>																																				
0698A	Plant Water System- Final Draft	30	0	100							0.00	▼Plant Water System- Final Draft O & M																								
<b>Methanol Feed Storage</b>																																				
0759A	Methanol System- Final Draft O &	1	0	100							0.00	▼Methanol System- Final Draft O & M																								
<b>Sodium Hydroxide</b>																																				
0715A	FRP Tank- Final Draft O & M	30	30	0	01JUN12	30JUN12	14JUN12	13JUL12	13		0.00	▼FRP Tank- Final Draft O & M																								
<b>EQ Electrical Building</b>																																				
0818A	HVAC Equip.- Final Draft O & M	30	30	0	01JUN12	30JUN12	14JUN12	13JUL12	13	MANHOURS	0.00	▼HVAC Equip.- Final Draft O & M																								
<b>UV Disinfection Facility</b>																																				
0799A	UV Equip.- Final Draft O & M	30	0	100							0.00	▼UV Equip.- Final Draft O & M																								
0819A	Hoist- Final Draft O & M	30	0	100							0.00	▼Hoist- Final Draft O & M																								
<b>FINAL</b>																																				
<b>Main Pumping Station</b>																																				
0789	Screen- Final O & M	30	30	0	01JUN12	30JUN12	30JUN12	29JUL12	29		0.00	▼Screen- Final O & M																								
<b>EQ Pump Station</b>																																				
0729	EQ Pumps- Final O & M	30	30	0	01JUL12	30JUL12	24JUL12	22AUG12	23		0.00	▼EQ Pumps- Final O & M																								
<b>Reactors 3&amp;4</b>																																				
0705	Mixer- Final O & M	30	30	0	31JUL12	29AUG12	11OCT12	09NOV12	72		0.00	Mixer- Final O & M ▼																								
0745	Diffuser- Final O & M	30	30	0	31JUL12	29AUG12	11OCT12	09NOV12	72		0.00	Diffuser- Final O & M ▼																								
0765	Nitrate Pump- Final O & M	30	30	0	31JUL12	29AUG12	11OCT12	09NOV12	72		0.00	Nitrate Pump- Final O & M ▼																								
0785	Davit Crane- Final O & M	30	30	0	31JUL12	29AUG12	11OCT12	09NOV12	72		0.00	Davit Crane- Final O & M ▼																								
<b>Reactor Aeration Gallery 1</b>																																				
0634	RAS Pumps- Final O & M	30	30	0	01JUL12	30JUL12	22JUL12	20AUG12	21		0.00	▼RAS Pumps- Final O & M																								
0674	Chlorination- Final O & M	30	30	0	01JUL12	30JUL12	22JUL12	20AUG12	21		0.00	▼Chlorination- Final O & M																								
<b>Reactor Aeration Gallery 2</b>																																				
0696	Valve Operator- Final O & M	30	30	0	01JUL12	30JUL12	18JUL12	16AUG12	17		0.00	▼Valve Operator- Final O & M																								
<b>Denitrification Filter Facility</b>																																				
0687	Denitrification Equip.- Final O & M	30	30	0	01JUL12	30JUL12	02JUL12	31JUL12	1		0.00	▼Denitrification Equip.- Final O & M																								
<b>Rapid Mix Chamber</b>																																				
0676	Rapid Mixer- Final O & M	30	30	0	01JUL12	30JUL12	21JUL12	19AUG12	20		0.00	▼Rapid Mixer- Final O & M																								
<b>Grit Removal Facility</b>																																				
0670	Sluice Gate- Final O & M	30	30	0	31JUL12	29AUG12	08AUG12	06SEP12	8		0.00	▼Sluice Gate- Final O & M																								
0690	Blower- Final O & M	30	30	0	31JUL12	29AUG12	11AUG12	09SEP12	11		0.00	▼Blower- Final O & M																								
<b>Admin. Chem Feec</b>																																				
0749	Chem Feed Pumps- Final O & M	30	0	100							0.00	▼Chem Feed Pumps- Final O & M																								
<b>Chem Feed &amp; Process Water</b>																																				
0708	Plant Water System- Final O & M	30	0	100							0.00	▼Plant Water System- Final O & M																								
<b>Methanol Feed Storage</b>																																				
0769	Methanol System- Final O & M	30	9	70	01JUN12	09JUN12	10JUN12	18JUN12	9		0.00	▼Methanol System- Final O & M																								
<b>Sodium Hydroxide</b>																																				
0725	FRP Tank- Final O & M	30	30	0	01JUL12	30JUL12	14JUL12	12AUG12	13		0.00	▼FRP Tank- Final O & M																								

Activity ID	Activity Description	Orig Dur	Rem Dur	%	Early Start	Early Finish	Late Start	Late Finish	Total Float	Resource	Budgeted Cost	2012																								
												MAY 28	4	11	18	25	2	9	16	23	30	6	13	20	27	3	10	17	24	1	8	15	22	29	5	12
<b>EQ Electrical Building</b>																																				
0828	HVAC Equip.- Final O & M	30	30	0	01JUL12	30JUL12	14JUL12	12AUG12	13		0.00	HVAC Equip.- Final O & M																								
<b>UV Disinfection Facility</b>																																				
0809	UV Equip.- Final O & M	30	0	100							0.00	UV Equip.- Final O & M																								
0829	Hoist- Final O & M	30	0	100							0.00	Hoist- Final O & M																								
<b>FIELD ACTIVITIES</b>																																				
<b>Chlorine Contact Tank</b>																																				
0516.2	Bypass Pumping Chlorine	8*	8*	0	18JUN12	25JUN12	20JUL12	29JUL12	34		0.00	Bypass Pumping Chlorine Contact																								
<b>Plant Wide E&amp;I</b>																																				
0142	Control System Testing- 17166	5	5	0	21AUG12	25AUG12	21AUG12	25AUG12	0	MANHOURS	500.00	Control System Testing- 17166																								
0685.2	Plant Operational Test	20	20	0	21AUG12	09SEP12	21AUG12	09SEP12	0		0.00	Plant Operational Test																								
<b>Site Work</b>																																				
0049	Strip Topsoil	10	5	55	01JUN12	08JUN12	21JUN12	28JUN12	11	MANHOURS	16,300.00	Strip Topsoil																								
0050	Site Cut and Fill	20	6	70	01JUN12	11JUN12	21JUN12	29JUN12	11	MANHOURS	410,000.00	Site Cut and Fill																								
0054	Conc. Curbs	10	10	0	01JUN12	18JUN12	21JUN12	09JUL12	11	MANHOURS	4,300.00	Conc. Curbs																								
0056	Pipe Bollards	10	10	0	01JUN12	18JUN12	10JUL12	26JUL12	21	MANHOURS	16,100.00	Pipe Bollards																								
0044	LOD Fence	10	0	100						MANHOURS	13,300.00	LOD Fence																								
0045	Tree Protection	5	0	100						MANHOURS	17,300.00	Tree Protection																								
0046	Initial E&S Controls	5	0	100						MANHOURS	31,200.00	Initial E&S Controls																								
0047	Sediment Trap ST-1	20	0	100						MANHOURS	24,850.00	Sediment Trap ST-1																								
0048	Site Demolition	10	0	100						MANHOURS	45,815.00	Site Demolition																								
0058	Stormwater System	20	0	100						MANHOURS	95,000.00	Stormwater System																								
0047.4	Sediment Trap ST-2	20	0	100						MANHOURS	24,850.00	Sediment Trap ST-2																								
0055	Conc. Walks	10	10	0	19JUN12	06JUL12	10JUL12	26JUL12	11	MANHOURS	28,800.00	Conc. Walks																								
0053	Turf Paving	10	10	0	19JUL12	03AUG12	20JUL12	06AUG12	1	MANHOURS	20,200.00	Turf Paving																								
0051	Patch Paving	15	15	0	27JUL12	21AUG12	27JUL12	21AUG12	0	MANHOURS	27,000.00	Patch Paving																								
0059	Landscaping	10	10	0	27JUL12	13AUG12	30JUL12	14AUG12	1	MANHOURS	16,000.00	Landscaping																								
0060	Site Restoration	15	14	5	14AUG12	06SEP12	16AUG12	07SEP12	1	MANHOURS	14,000.00	Site Restoration																								
0052	New Paving	10	10	0	23AUG12	07SEP12	23AUG12	07SEP12	0	MANHOURS	65,000.00	New Paving																								
<b>Yard Piping Installation &amp; Testing</b>																																				
0093	Stainless 4	10	3	70	14JUN11A	05JUN12	14JUN11A	17AUG12	41	MANHOURS	21,700.00	Stainless 4																								
0064	Flow Eq Influent 20 EQ	2	2	0	01JUN12	04JUN12	04JUN12	05JUN12	1	MANHOURS	6,600.00	Flow Eq Influent 20 EQ																								
0066	Primary Effluent D RAS	5	2	55	01JUN12	04JUN12	04JUN12	05JUN12	1	MANHOURS	21,500.00	Primary Effluent D RAS																								
0067	Reactor Influent B RAS	8	6	22	01JUN12	11JUN12	04JUN12	12JUN12	1	MANHOURS	34,000.00	Reactor Influent B RAS																								
0068	Final Clarifier Influent 36 K UV	5	1	90	01JUN12	01JUN12	04JUN12	04JUN12	1	MANHOURS	14,600.00	Final Clarifier Influent 36 K UV																								
0067.2	Reactor Influent C RAS	3	2	45	01JUN12	04JUN12	04JUN12	05JUN12	1	MANHOURS	22,250.00	Reactor Influent C RAS																								
0067.6	Reactor Influent F RAS & Line I	8	6	20	01JUN12	11JUN12	04JUN12	12JUN12	1	MANHOURS	40,000.00	Reactor Influent F RAS & Line I																								
0091	RAS A,H	10	8	20	01JUN12	14JUN12	05JUL12	17JUL12	18	MANHOURS	55,200.00	RAS A,H																								
0069	Final Clarifier Effluent J UV	5	1	80	04JUN12	04JUN12	05JUN12	05JUN12	1	MANHOURS	22,000.00	Final Clarifier Effluent J UV																								
0063	Flow Eq Influent 30 P EQ	5	5	0	05JUN12	12JUN12	07JUN12	14JUN12	1	MANHOURS	19,400.00	Flow Eq Influent 30 P EQ																								
0090	WAS 6	5	5	0	05JUN12	12JUN12	07JUN12	14JUN12	1	MANHOURS	4,800.00	WAS 6																								
0079	Filter Recycle 8 N Grit	10	10	0	07JUN12	22JUN12	21JUN12	09JUL12	8	MANHOURS	36,500.00	Filter Recycle 8 N Grit																								
0062	Plant Influent O EQ	5	5	0	08JUN12	15JUN12	11JUN12	18JUN12	1	MANHOURS	19,300.00	Plant Influent O EQ																								
0065	Flow EQ Return Q EQ	5	5	0	11JUN12	18JUN12	12JUN12	19JUN12	1	MANHOURS	15,700.00	Flow EQ Return Q EQ																								
0067.4	Reactor Influent E RAS	3	2	20	12JUN12	14JUN12	22JUN12	25JUN12	6	MANHOURS	22,250.00	Reactor Influent E RAS																								
0067.8	Reactor Influent G RAS	8	3	62	12JUN12	15JUN12	22JUN12	26JUN12	6	MANHOURS	40,000.00	Reactor Influent G RAS																								
0075	Plant Drain 6	2	2	0	15JUN12	18JUN12	30JUL12	31JUL12	24	MANHOURS	1,600.00	Plant Drain 6																								
0092	Sludge Transfer	3	3	0	15JUN12	19JUN12	30JUL12	02AUG12	24	MANHOURS	2,200.00	Sludge Transfer																								
0080	Filter Recycle 10	2	2	0	19JUN12	21JUN12	21JUN12	22JUN12	1	MANHOURS	1,700.00	Filter Recycle 10																								
0074	Plant Drain 4	3	2	40	21JUN12	22JUN12	22JUN12	25JUN12	1	MANHOURS	5,300.00	Plant Drain 4																								

Activity ID	Activity Description	Orig Dur	Rem Dur	%	Early Start	Early Finish	Late Start	Late Finish	Total Float	Resource	Budgeted Cost	2012																																								
												MAY	JUN					JUL					AUG			SEP		OCT			NOV																					
												28	4	11	18	25	2	9	16	23	30	6	13	20	27	3	10	17	24	1	8	15	22	29	5	12																
0089	WAS 4	5	0	100						MANHOURS	6,500.00																																									
0077	Plant Drain 1.5	2	2	0	25JUN12	26JUN12	26JUN12	28JUN12	1	MANHOURS	1,900.00																																									
0076	Plant Drain 8	3	0	100						MANHOURS	15,100.00																																									
0086	Sodium Hydroxide	3	2	50	28JUN12	29JUN12	29JUN12	02JUL12	1	MANHOURS	1,700.00																																									
0087	Sodium Hydroxide Duct	5	5	10	28JUN12	06JUL12	29JUN12	09JUL12	1	MANHOURS	4,000.00																																									
0081	Polyaluminun Chloride	5	0	100						MANHOURS	36,800.00																																									
0082	Cationic Polymer	3	0	100						MANHOURS	4,600.00																																									
0094	Plant Water 10	2	1	70	02JUL12	02JUL12	05JUL12	05JUL12	1	MANHOURS	3,400.00																																									
0095	Plant Water 3	4	4	0	05JUL12	10JUL12	06JUL12	12JUL12	1	MANHOURS	4,800.00																																									
0097	Plant Water 6	2	0	95	05JUL12	02JUL12	13JUL12	12JUL12	5	MANHOURS	9,400.00																																									
0096	Plant Water 4	3	3	0	12JUL12	16JUL12	13JUL12	17JUL12	1	MANHOURS	1,200.00																																									
0098	Plant Water 1	2	2	0	17JUL12	19JUL12	19JUL12	20JUL12	1	MANHOURS	900.00																																									
0084	Phosphoric Acid Duct	10	1	90	17JUL12	17JUL12	14AUG12	14AUG12	16	MANHOURS	6,700.00																																									
0083	Phosphoric Acid	2	2	0	19JUL12	20JUL12	16AUG12	17AUG12	16	MANHOURS	2,400.00																																									
0099	Plant Water 2	5	2	55	20JUL12	23JUL12	23JUL12	24JUL12	1	MANHOURS	19,300.00																																									
0100	Potable Water 1.25	3	3	15	24JUL12	27JUL12	26JUL12	30JUL12	1	MANHOURS	2,000.00																																									
0101	Potable Water 2	2	1	30	30JUL12	30JUL12	31JUL12	31JUL12	1	MANHOURS	13,300.00																																									
0070	Filter Effluent L UV	5	2	70	31JUL12	02AUG12	02AUG12	03AUG12	1	MANHOURS	16,700.00																																									
0078	Filter Recycle 6	2	2	0	03AUG12	06AUG12	06AUG12	07AUG12	1	MANHOURS	21,000.00																																									
0071	UV Effluent M UV	5	5	0	07AUG12	14AUG12	09AUG12	16AUG12	1	MANHOURS	24,100.00																																									
0072	Plant Effluent	5	5	0	07AUG12	14AUG12	09AUG12	16AUG12	1	MANHOURS	30,600.00																																									
0088	Scum	3	3	0	07AUG12	10AUG12	09AUG12	13AUG12	1	MANHOURS	1,000.00																																									
0073	Plant Drain 3	2	2	0	16AUG12	17AUG12	17AUG12	20AUG12	1	MANHOURS	1,800.00																																									
0085	Pre-chlorine Solution	3	0	100						MANHOURS	21,000.00																																									
<b>Duct Banks</b>																																																				
0124	VV DUV	2	2	15	01JUN12	04JUN12	07JUN12	08JUN12	3	MANHOURS	18,300.00																																									
0125	WWDUV	10	9	15	01JUN12	15JUN12	07JUN12	21JUN12	3	MANHOURS	9,100.00																																									
0139	KKKK Meth	10	1	90	01JUN12	01JUN12	26JUL12	26JUL12	30	MANHOURS	10,300.00																																									
0140	LLLL Meth	5	4	20	04JUN12	08JUN12	27JUL12	02AUG12	30	MANHOURS	6,300.00																																									
0119	QQ C3,4	10	2	80	05JUN12	07JUN12	07JUN12	08JUN12	1	MANHOURS	5,400.00																																									
0126	XX DUV	10	8	25	07JUN12	19JUN12	12JUN12	25JUN12	3	MANHOURS	9,600.00																																									
0120	RR C3,4	10	2	80	08JUN12	11JUN12	11JUN12	12JUN12	1	MANHOURS	11,800.00																																									
0141	BBBBBB Fiber Optic	20	19	5	11JUN12	13JUL12	03AUG12	04SEP12	30	MANHOURS	71,400.00																																									
0121	SS C3,4	5	2	65	12JUN12	14JUN12	14JUN12	15JUN12	1	MANHOURS	3,100.00																																									
0122	TT C3,4	5	5	0	15JUN12	22JUN12	18JUN12	25JUN12	1	MANHOURS	3,700.00																																									
0123	UU C3,4	5	1	80	25JUN12	25JUN12	26JUN12	26JUN12	1	MANHOURS	2,200.00																																									
0127	YY DUV	5	2	60	25JUN12	26JUN12	26JUN12	28JUN12	1	MANHOURS	3,700.00																																									
0111	II SH	10	2	82	25JUN12	26JUN12	20JUL12	23JUL12	14	MANHOURS	10,300.00																																									
0104	BB EQ	10	5	52	25JUN12	02JUL12	24JUL12	31JUL12	16	MANHOURS	70,900.00																																									
0103	AA EQ	10	0	100						MANHOURS	64,300.00																																									
0105	CC EQ	3	0	100						MANHOURS	2,100.00																																									
0128	ZZ DUV	5	2																																																	

Activity ID	Activity Description	Orig Dur	Rem Dur	%	Early Start	Early Finish	Late Start	Late Finish	Total Float	Resource	Budgeted Cost	2012																																				
												MAY 28	JUN 4	JUN 11	JUN 18	JUN 25	JUL 2	JUL 9	JUL 16	JUL 23	JUL 30	AUG 6	AUG 13	AUG 20	AUG 27	SEP 3	SEP 10	SEP 17	SEP 24	OCT 1	OCT 8	OCT 15	OCT 22	OCT 29	NOV 5	NOV 12												
0110	HH Grit	10	0	100						MANHOURS	12,200.00																																					
0113	KK RAS	10	3	70	06AUG12	09AUG12	07AUG12	10AUG12	1	MANHOURS	12,700.00																																					
0114	LL C1,2	10	2	80	10AUG12	13AUG12	13AUG12	14AUG12	1	MANHOURS	11,200.00																																					
0115	MM C1,2	5	1	80	14AUG12	14AUG12	16AUG12	16AUG12	1	MANHOURS	8,100.00																																					
0118	PP C1,2	5	5	5	16AUG12	23AUG12	17AUG12	24AUG12	1	MANHOURS	1,900.00																																					
0116	NN C1,2	5	0	100						MANHOURS	2,500.00																																					
0117	OO C1,2	5	0	100						MANHOURS	3,200.00																																					
<b>Overhead Air Line</b>																																																
0143	Excavation	15	0	100	03OCT11A	27OCT11A	03OCT11A	27OCT11A		MANHOURS	9,300.00																																					
0145	Supports	5	0	100	03OCT11A	03OCT11A	03OCT11A	03OCT11A		MANHOURS	71,400.00																																					
0147	Pipe Testing	2	0	100	19OCT11A	20OCT11A	19OCT11A	20OCT11A		MANHOURS	2,000.00																																					
0144	Footings & Piers	10	0	100	20OCT11A	04NOV11A	20OCT11A	04NOV11A		MANHOURS	39,100.00																																					
0146	Pipe	10	0	100	20OCT11A	01NOV11A	20OCT11A	01NOV11A		MANHOURS	73,200.00																																					
0227	Temp Air to grit	5	0	100	20OCT11A	24OCT11A	20OCT11A	24OCT11A		MANHOURS	2,000.00																																					
<b>Main Pumping Station</b>																																																
0149	Demolition	19	4	80	01JUN12	07JUN12	05JUN12	11JUN12	2	MANHOURS	14,300.00																																					
0150	Excavation	15	15	0	01JUN12	26JUN12	05JUN12	29JUN12	2	MANHOURS	17,200.00																																					
0151	Conc Slab	5	5	0	21JUN12	28JUN12	25JUN12	02JUL12	2	MANHOURS	5,600.00																																					
0152	Conc Walls	10	10	0	29JUN12	17JUL12	05JUL12	20JUL12	2	MANHOURS	40,200.00																																					
0158	Screen & Gate 1112 Installation	10	9	15	29JUN12	16JUL12	10JUL12	24JUL12	5	MANHOURS	20,000.00																																					
0163	Elec Demo	2	2	0	29JUN12	02JUL12	10JUL12	12JUL12	5	MANHOURS	1,100.00																																					
0158.2	Bypass Pumping Gate 1112	18*	18*	0	29JUN12	16JUL12	10JUL12	24JUL12	8		0.00																																					
0164	Conduit	20	8	60	05JUL12	17JUL12	13JUL12	26JUL12	5	MANHOURS	30,900.00																																					
0159	Davit Crane	1	0	100						MANHOURS	3,700.00																																					
0629	Screen Field Testing & Training	3	0	100							0.00																																					
0153	Elevated Slab	5	5	0	19JUL12	26JUL12	23JUL12	30JUL12	2	MANHOURS	5,700.00																																					
0165	Wire	10	7	35	19JUL12	30JUL12	27JUL12	07AUG12	5	MANHOURS	9,400.00																																					
0154	Metals	5	5	0	23JUL12	30JUL12	26JUL12	02AUG12	2	MANHOURS	2,400.00																																					
0155	Painting	5	5	0	23JUL12	30JUL12	26JUL12	02AUG12	2	MANHOURS	5,100.00																																					
0156	Weir Plate Installation	3	3	0	23JUL12	26JUL12	26JUL12	30JUL12	2	MANHOURS	16,000.00																																					
0160	Primary Influent 16	5	5	0	23JUL12	30JUL12	26JUL12	02AUG12	2	MANHOURS	12,700.00																																					
0161	Primary Influent 18	5	5	0	24JUL12	31JUL12	30JUL12	06AUG12	3	MANHOURS	5,200.00																																					
0162	Plug Valve	2	2	0	24JUL12	26JUL12	30JUL12	31JUL12	3	MANHOURS	4,000.00																																					
0157	Core Drill 24" & 30" & Gate 1111	10	10	0	26JUL12	10AUG12	30JUL12	14AUG12	2	MANHOURS	2,000.00																																					
0157.2	Bypass Pumping Gate 1111	16*	16*	0	26JUL12	10AUG12	30JUL12	14AUG12	4		0.00																																					
0617	Leak Testing Weir Plates	1	1	0	27JUL12	27JUL12	14AUG12	14AUG12	10	MANHOURS	500.00																																					
0167	Instrumentation	5	3	50	31JUL12	03AUG12	09AUG12	13AUG12	5	MANHOURS	2,400.00																																					
0166	Panels, Control Panels, VFD &	5	0	100						MANHOURS	4,900.00																																					
0167.2	Pt to Pt Testing	2	2	0	06AUG12	07AUG12	14AUG12	16AUG12	5		0.00																																					
0618	Leak Test Gates	1	1	0	13AUG12	13AUG12	16AUG12	16AUG12	2	MANHOURS	1,400.00																																					
0168	Start-up	5	5	0	14AUG12	21AUG12	17AUG12	24AUG12	2	MANHOURS	1,800.00																																					
0168.2	Reliability Test	14	14	0	22AUG12	04SEP12	27AUG12	09SEP12	5		0.00																																					
<b>EQ Pump Station</b>																																																
0171	Shoring	10	3	75	01JUN12	05JUN12	04JUN12	07JUN12	1	MANHOURS	26,000.00																																					
0173.1	Conc Walls Upper	10	10	0	01JUN12	18JUN12	04JUN12	19JUN																																								



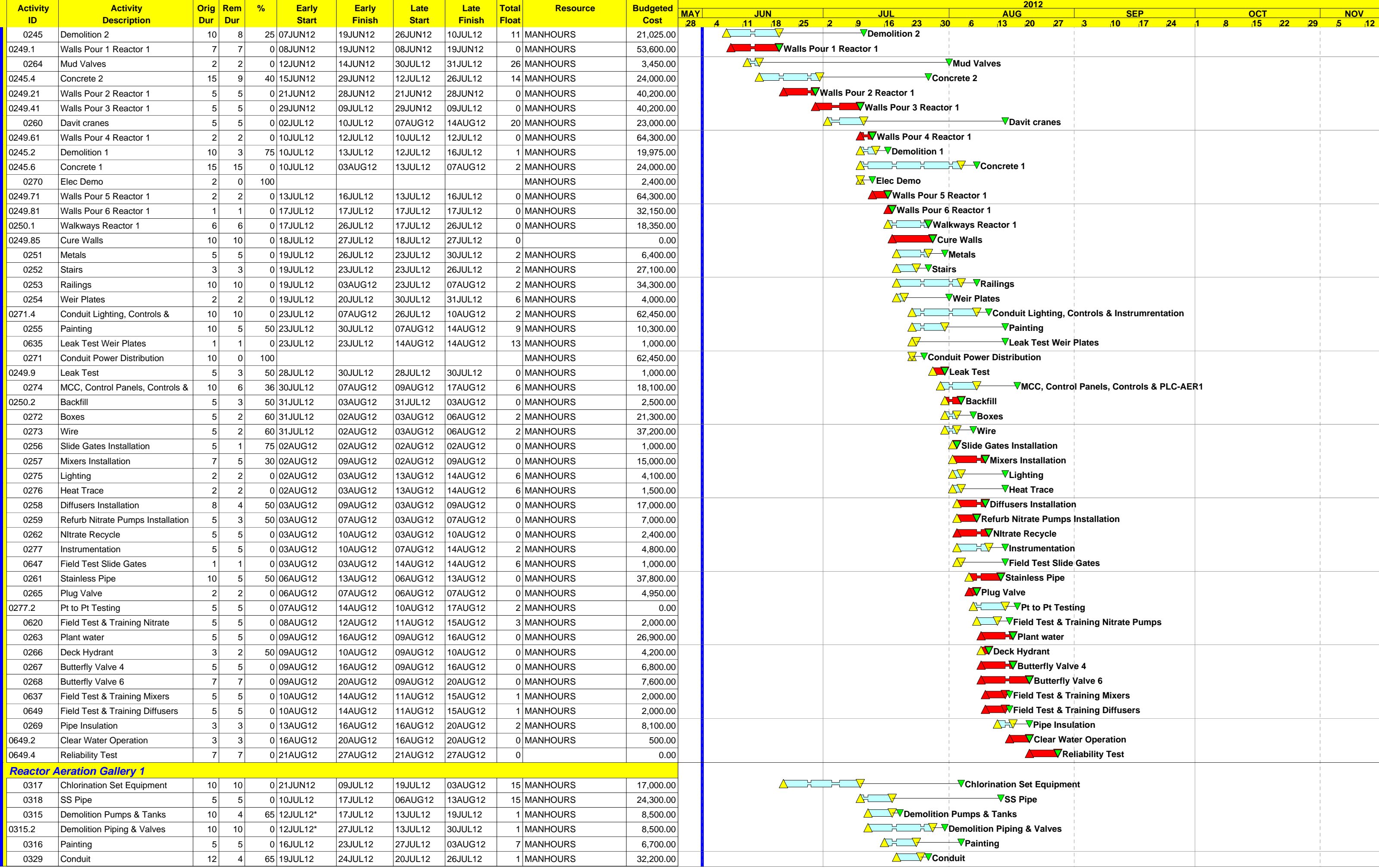














Activity ID	Activity Description	Orig Dur	Rem Dur	%	Early Start	Early Finish	Late Start	Late Finish	Total Float	Resource	Budgeted Cost	2012																										
												MAY	JUN					JUL					AUG				SEP				OCT				NOV			
												28		4	11	18	25	2	9	16	23	30	6	13	20	27	3	10	17	24	1	8	15	22	29	5	12	
0360.6	Walls Drop Box Walls & Slabs	10	0	100						MANHOURS	48,960.00																											
0361.2	Cure Walls	10	0	100						MANHOURS	0.00																											
0374.1	Manufacturer's Inspection	1	1	0	07JUN12	07JUN12	19JUN12	19JUN12	7		0.00																											
0374.3	Manufacturer's Inspection	1	1	0	08JUN12	08JUN12	21JUN12	21JUN12	7		0.00																											
0374.2	Denitrification Equip Installation	15	0	100						MANHOURS	60,000.00																											
0374.4	Denitrification Equip Installation	10	10	0	11JUN12	26JUN12	22JUN12	10JUL12	7	MANHOURS	60,000.00																											
0371	Roofing	5	1	75	19JUN12	19JUN12	02JUL12	02JUL12	7	MANHOURS	23,400.00																											
0387	Leak Testing	5	1	85	19JUN12	19JUN12	20JUL12	20JUL12	17	MANHOURS	4,700.00																											
0362	Precast Columns	2	0	100						MANHOURS	47,200.00																											
0363	Precast Beams	2	0	100						MANHOURS	59,700.00																											
0364	Precast Planks	3	0	100						MANHOURS	13,500.00																											
0365	Fascia Panels	1	0	100						MANHOURS	31,300.00																											
0370	Roof Blocking	1	0	100						MANHOURS	2,800.00																											
0369	Gratings	5	0	95	21JUN12	19JUN12	26JUN12	25JUN12	3	MANHOURS	13,700.00																											
0372	Doors & Windows	5	5	0	21JUN12	28JUN12	26JUN12	05JUL12	3	MANHOURS	4,300.00																											
0381	Panel, Controls & Control Panels	5	3	35	21JUN12	25JUN12	05JUL12	09JUL12	7	MANHOURS	4,100.00																											
0375	Weir Plates	2	0	90	21JUN12	19JUN12	23JUL12	20JUL12	17	MANHOURS	4,300.00																											
0376	Slide Gate	5	0	95	21JUN12	19JUN12	23JUL12	20JUL12	17	MANHOURS	22,000.00																											
0373	Painting	5	5	0	21JUN12	28JUN12	24JUL12	31JUL12	18	MANHOURS	7,400.00																											
0636	Weir Plate Leak Testing	1	1	0	21JUN12	21JUN12	10AUG12	10AUG12	28	MANHOURS	300.00																											
0657	Slide Gate Field Testing	1	1	0	21JUN12	21JUN12	10AUG12	10AUG12	28	MANHOURS	2,200.00																											
0367	Stairs	1	0	100						MANHOURS	97,000.00																											
0368	Railings	10	0	100						MANHOURS	16,400.00																											
0387.2	Backfill	5	0	100						MANHOURS	2,500.00																											
0382	Conduit	12	1	95	26JUN12	26JUN12	10JUL12	10JUL12	7	MANHOURS	41,800.00																											
0377	SS Pipe	2	1	75	26JUN12	26JUN12	20JUL12	20JUL12	13	MANHOURS	4,100.00																											
0383	Boxes	2	0	95	28JUN12	26JUN12	12JUL12	10JUL12	7	MANHOURS	4,300.00																											
0384	Wire	10	8	20	28JUN12	12JUL12	12JUL12	24JUL12	7	MANHOURS	19,700.00																											
0378	Denitrification Filter Recycle	5	5	0	28JUN12	06JUL12	23JUL12	30JUL12	13	MANHOURS	12,200.00																											
0380	HVAC	15	15	0	29JUN12	26JUL12	06JUL12	31JUL12	3	MANHOURS	112,000.00																											
0379	Denitrification Influent	5	1	75	09JUL12	09JUL12	31JUL12	31JUL12	13	MANHOURS	5,400.00																											
0386	Instrumentation	10	10	0	13JUL12	30JUL12	26JUL12	10AUG12	7	MANHOURS	6,275.00																											
0385	Lighting	3	0	90	13JUL12	12JUL12	02AUG12	31JUL12	11	MANHOURS	4,700.00																											
0655	Denitrification Equipment Field	10	10	0	31JUL12	09AUG12	01AUG12	10AUG12	1	MANHOURS	5,000.00																											
0388	Reliability Testing	14	14	0	10AUG12	23AUG12	11AUG12	24AUG12	1	MANHOURS	0.00																											
0388.2	Acclimation Period	30	30	0	10AUG12	08SEP12	11AUG12	09SEP12	1		0.00																											
0644	Operation Testing	14	14	0	24AUG12	06SEP12	27AUG12	09SEP12	3	MANHOURS	5,000.00																											
<b>Denitrification Pump Station</b>																																						
0390	Excavation	5	1	75	01JUN12	01JUN12	15JUN12	15JUN12	8	MANHOURS	19,700.00																											
0396	Davit Crane	1	1	0	01JUN12	01JUN12	19JUN12	19JUN12	10	MANHOURS	3,700.00																											
0394	Recycle Pumps	2	2	15	04JUN12*	05JUN12	18JUN12	19JUN12	8	MANHOURS	1,800.00																											
0402	Conduit	6	4	30	04JUN12	08JUN12	13JUL12	19JUL12	22	MANHOURS	18,700.00																											
0395	Sump Pump	2	2	0	04JUN12	05JUN12	24JUL12	26JUL12	28	MANHOURS	1,500.00																											
0393	Painting	2	2	0	04JUN12	05JUN12	27JUL12	30JUL12	30	MANHOURS	2,100.00																											
0391	Precast	2	0	100						MANHOURS	21,700.00																											
0392	Metals	1	0	100						MANHOURS	1,900.00																											
0397	Denitrification Pump Station 8	5	5	0	07JUN12	14JUN12	21JUN12	28JUN12	8	MANHOURS	9,900.00																											
0404	Controls & Control Panel	2	2	0	07JUN12	08JUN12	19JUL12	20JUL12	23	MANHOURS	2,900.00																											
0401	Lighting	6	6	0	11JUN12	19JUN12	20JUL12	30JUL12	22	MANHOURS	1,700.00																											
0403	Wire	2	2	20	11JUN12	12JUN12	23JUL12	24JUL12	23	MANHOURS	13,100.00																											
0405	Instrumentation	3	3	0	14JUN12	18JUN12	26JUL12	30JUL12	23	MANHOURS	23,000.00																											
0398	Denitrification Pump Station 10	2	2	0	15JUN12	18JUN12	27JUL12	30JUL12	23	MANHOURS	2,700.00																											
0399	Plug Valve	2	2	0	15JUN12	18JUN12	27JUL12	30JUL12	23	MANHOURS	950.00																											
0400	Swing Check Valve	1	1	0	18JUN12	18JUN12	30JUL12	30JUL12	23	MANHOURS	1,700.00																											
0654	Pump Field Testing & Training	1	1	0	21JUN12	21JUN12	31JUL12	31JUL12	22	MANHOURS	1,000.00																											
<b>Rapid Mix Chamber</b>																																						
0414	Painting	5	5	0	04JUN12	11JUN12	13AUG12	20AUG12	39	MANHOURS	1,100.00																											





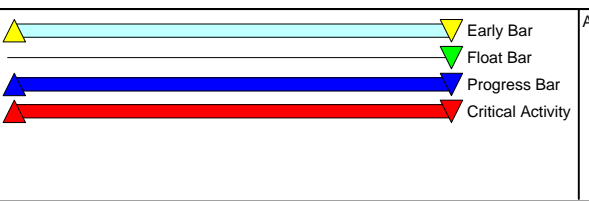
Activity ID	Activity Description	Orig Dur	Rem Dur	%	Early Start	Early Finish	Late Start	Late Finish	Total Float	Resource	Budgeted Cost	2012																							
												MAY 28	JUN					JUL					AUG				SEP				OCT			NOV 5	
0457.2	Reliability Test	14	14	0	19JUN12	02JUL12	27OCT12	09NOV12	130		0.00	Reliability Test																							
<b>Chem Feed &amp; Process Water</b>																																			
0459	Demolition	10	2	80	19JUN12	21JUN12	21JUN12	22JUN12	1	MANHOURS	13,900.00	Demolition																							
0460	Conc Pads Includes Genset Pads	5	1	90	19JUN12	19JUN12	21JUN12	21JUN12	1	MANHOURS	1,500.00	Conc Pads Includes Genset Pads																							
0466	Chem Metering PA	10	10	0	19JUN12	06JUL12	21JUN12	09JUL12	1	MANHOURS	1,000.00	Chem Metering PA																							
0467	Air compressor Equip	10	10	0	19JUN12	06JUL12	21JUN12	09JUL12	1	MANHOURS	2,400.00	Air compressor Equip																							
0468	Plant Water	20	10	50	19JUN12	06JUL12	21JUN12	09JUL12	1	MANHOURS	21,000.00	Plant Water																							
0485	Elec Demo	1	1	50	19JUN12	19JUN12	21JUN12	21JUN12	1	MANHOURS	2,100.00	Elec Demo																							
0489	XFMR, MCC, Cntrl Pnls,	10	10	5	19JUN12	06JUL12	21JUN12	09JUL12	1	MANHOURS	15,400.00	XFMR, MCC, Cntrl Pnls, Controls, VFD & PLC-CHEM																							
0486.4	Conduit Lighting, Controls &	20	12	40	19JUN12	10JUL12	21JUN12	12JUL12	1	MANHOURS	74,150.00	Conduit Lighting, Controls & Instrumentation																							
0486	Conduit Power Distribution	10	0	100						MANHOURS	74,150.00	Conduit Power Distribution																							
0487	Boxes	5	0	100						MANHOURS	16,900.00	Boxes																							
0488	Wire	15	0	100						MANHOURS	61,300.00	Wire																							
0461	Masonry	3	3	0	21JUN12	25JUN12	26JUN12	29JUN12	3	MANHOURS	2,200.00	Masonry																							
0484	HVAC	15	15	0	21JUN12	17JUL12	28JUN12	24JUL12	4	MANHOURS	31,200.00	HVAC																							
0491	Instrumentation	15	15	0	22JUN12	19JUL12	25JUN12	20JUL12	1	MANHOURS	24,000.00	Instrumentation																							
0462	Metals	5	5	0	26JUN12	05JUL12	02JUL12	10JUL12	3	MANHOURS	7,900.00	Metals																							
0471	Plant Water 6	5	5	10	28JUN12	06JUL12	29JUN12	09JUL12	1	MANHOURS	10,700.00	Plant Water 6																							
0491.2	Pt to Pt Testing	10	10	0	29JUN12	17JUL12	02JUL12	19JUL12	1		0.00	Pt to Pt Testing																							
0470	Comp Air 1	3	3	0	02JUL12	06JUL12	05JUL12	09JUL12	1	MANHOURS	2,800.00	Comp Air 1																							
0463	Blocking	2	2	0	02JUL12	05JUL12	09JUL12	10JUL12	3	MANHOURS	400.00	Blocking																							
0464	Roofing	5	5	0	02JUL12	10JUL12	09JUL12	16JUL12	3	MANHOURS	4,300.00	Roofing																							
0472	Plant Water 8	2	2	0	05JUL12	06JUL12	06JUL12	09JUL12	1	MANHOURS	4,800.00	Plant Water 8																							
0473	Plant Water 10	10	6	40	05JUL12	13JUL12	06JUL12	16JUL12	1	MANHOURS	31,200.00	Plant Water 10																							
0469	Comp Air .75	1	1	0	06JUL12	06JUL12	09JUL12	09JUL12	1	MANHOURS	100.00	Comp Air .75																							
0491.4	Chemical Feed SCADA	14	14	0	06JUL12	19JUL12	07JUL12	20JUL12	1		0.00	Chemical Feed SCADA Programming																							
0465	Painting	10	10	0	06JUL12	23JUL12	12JUL12	27JUL12	3	MANHOURS	9,000.00	Painting																							
0478	Chem Feed Piping	5	5	0	09JUL12	16JUL12	06AUG12	13AUG12	16	MANHOURS	10,200.00	Chem Feed Piping																							
0475	Potable water	3	3	0	10JUL12	13JUL12	12JUL12	16JUL12	1	MANHOURS	3,200.00	Potable water																							
0476	Service Sink	2	2	0	10JUL12	12JUL12	12JUL12	13JUL12	1	MANHOURS	1,400.00	Service Sink																							
0474	Plant Drain	2	2	0	12JUL12	13JUL12	13JUL12	16JUL12	1	MANHOURS	4,500.00	Plant Drain																							
0479	Swing Check Valve 6	2	2	0	12JUL12	13JUL12	13JUL12	16JUL12	1	MANHOURS	1,650.00	Swing Check Valve 6																							
0480	Swing Check Valve 8	2	2	0	12JUL12	13JUL12	13JUL12	16JUL12	1	MANHOURS	2,050.00	Swing Check Valve 8																							
0490	Generator	5	3	50	12JUL12	16JUL12	13JUL12	17JUL12	1	MANHOURS	20,300.00	Generator																							
0477	Eyewash	2	2	0	13JUL12	16JUL12	16JUL12	17JUL12	1	MANHOURS	7,600.00	Eyewash																							
0482	Gate valve 8	2	2	25	13JUL12	16JUL12	16JUL12	17JUL12	1	MANHOURS	1,050.00	Gate valve 8																							
0483	Gate Valve 10	2	2	0	13JUL12	16JUL12	16JUL12	17JUL12	1	MANHOURS	1,433.00	Gate Valve 10																							
0657.2	Owner Provide Chemicals	1	1	0	13JUL12	13JUL12	17JUL12	17JUL12	2		0.00	Owner Provide Chemicals																							
0481	Gate Valve 6	2	1	50	16JUL12	16JUL12	17JUL12	17JUL12	1	MANHOURS	725.00	Gate Valve 6																							
0621	Generator Field Testing &	1	1	0	17JUL12	17JUL12	19JUL12	19JUL12	1	MANHOURS	1,000.00	Generator Field Testing & Training																							
0658	Chemical Metering Field Testing	10	10	0	17JUL12	26JUL12	18JUL12	27JUL12	1	MANHOURS	1,300.00	Chemical Metering Field Testing & Training																							
0492	Start-up	5	5	0	19JUL12	26JUL12	20JUL12	27JUL12	1	MANHOURS	3,200.00	Start-up																							
0492.2	Reliability Test	14	14	0	27JUL12	09AUG12	28JUL12	10AUG12	1		0.00	Reliability Test																							
<b>Methanol Feed Storage</b>																																			
0499	ADT Ducting	15	15	0	01JUN12	26JUN12	04JUN12	28JUN12	1	MANHOURS	60,000.00	ADT Ducting																							
0507	Brkrs, Control Pnes, Controls,	1	0	60	01JUN12	31MAY12	04JUN12	01JUN12	1	MANHOURS	22,300.00	Brkrs, Control Pnes, Controls, XFMR's & PLC-METH																							
0508	Conduit	10	9	10	01JUN12	15JUN12	04JUN12	18JUN12	1	MANHOURS	25,900.00	Conduit																							
0667	Methanol Equipment	20	20	0	01JUN12	06JUL12	04JUN12	09JUL12	1	MANHOURS	10,000.00	Methanol Equipment																							
0496	Fiberglass Buildings	5	5	0	01JUN12	08JUN12	05JUN12	12JUN12	2	MANHOURS	27,100.00	Fiberglass Buildings																							
0497	Methanol Pumps Installation	15	15	0	01JUN12	26JUN12	05JUN12	29JUN12	2	MANHOURS	29,000.00	Methanol Pumps Installation																							
0494	Excavation	5	0	100						MANHOURS	32,100.00	Excavation																							
0495	Conc Pads	10	0	100						MANHOURS	4,300.00	Conc Pads																							
0500	ADT Pipe	5	5	0	04JUN12	11JUN12	05JUN12	12JUN12	1	MANHOURS	33,300.00	ADT Pipe																							
0501	SS Pipe 1	5	5	0	04JUN12	11JUN12	07JUN12	14JUN12	2	MANHOURS	3,500.00	SS Pipe 1																							
0502	SS Pipe 2	2	2	0	07JUN12	08JUN12	11JUN12	12JUN12	2	MANHOURS	2,400.00	SS Pipe 2																							
0503	SS Pipe 4	5	5	0	07JUN12	14JUN12	11JUN12	18JUN12	2	MANHOURS	4,100.00	SS Pipe 4																							
0509	Boxes	4	4	0	11JUN12	15JUN12	12JUN12	18JUN12	1	MANHOURS	2,100.00	Boxes																							





Activity ID	Activity Description	Orig Dur	Rem Dur	%	Early Start	Early Finish	Late Start	Late Finish	Total Float	Resource	Budgeted Cost	2012																											
												MAY	JUN					JUL					AUG					SEP					OCT					NOV	
												28	4	11	18	25	2	9	16	23	30	6	13	20	27	3	10	17	24	1	8	15	22	29	5	12			
0614	Wire	5	1	85	05JUN12	05JUN12	04SEP12	04SEP12	51	MANHOURS	23,500.00		▲																				▼						
0615	Double Throw Switch & PLC	1	1	5	05JUN12	05JUN12	04SEP12	04SEP12	51	MANHOURS	2,400.00		▲																				▼						
0615.2	Pt to Pt Testing	2	2	0	16JUL12	17JUL12	06SEP12	07SEP12	30		0.00																					▼							
0005.2	Plant Operational	40	40	0	10SEP12	19OCT12	01OCT12	09NOV12	21		0.00																					▼							

Start Date	04JUN10
Finish Date	19OCT12
Data Date	01JUN12
Run Date	01JUN12 15:08



AB18  
Wickersham Construction  
Aberdeen WWTP

Date	Revision	Checked	Approved
01JUN12	5/31/12 Update		